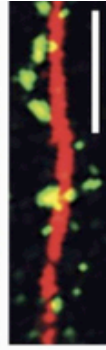
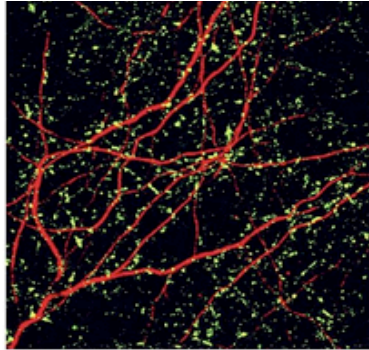




Make sense of your research!

Classy Chicken.....(Antibodies!)



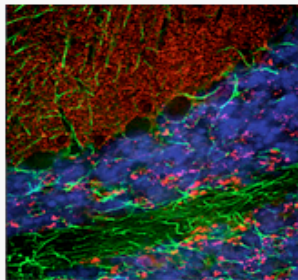
Why Chickens?

- High Titres
- High Affinities
- Easy double staining
- Animal friendly – from eggs
- Large batches, low variation
- Non-mammalian reduces non-specific interactions

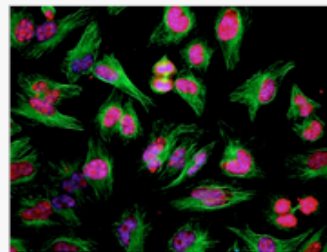
Thanks to Camin Dean Laboratory - European Neuroscience Institute, Göttingen, Germany (J. Gen. Physiol. Wolfes et al, 2017) Wild-type rat neurons grown on wild-type astrocytes.

Biosensis Chicken anti-MAP2 (dendrites: C-1382-50) and mouse anti-Synaptophysin (puncta).

Other chicken antibodies we love!



Chicken a-syn (C-1795-50) and Rabbit GFAP (R-1374-50)



Chicken Ki-67 (C-1807-50) and Mouse beta-tubulin