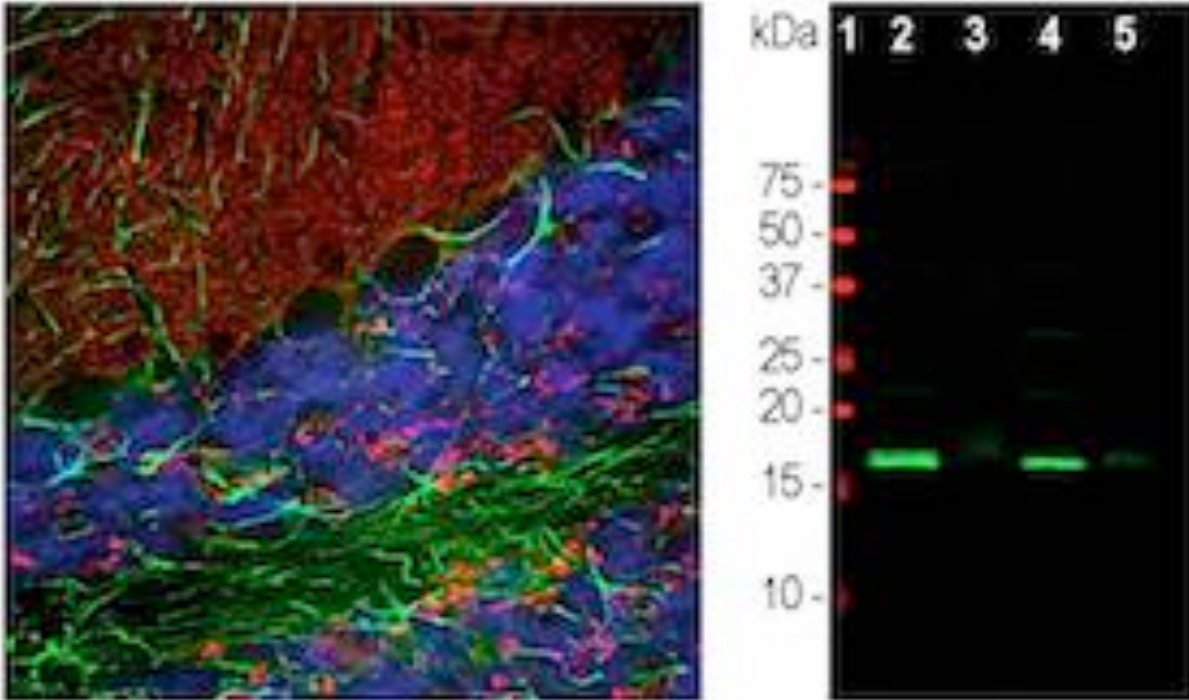


NEW Alpha-Synuclein Chicken Antibody!



Left: Rat cerebellum section stained with chicken anti- α -synuclein antibody (red, [C-1795-50](#), 1:3,000), rabbit anti-GFAP (green, R-[1374-50](#), 1:5,000) and DAPI nuclear dye (blue).

Right: Analysis of α -synuclein expression in tissue lysates. Lane 1: MWM; Lane 2: rat brain; Lane 3: rat spinal cord; Lane 4: mouse brain; Lane 5: mouse spinal cord. Antibody dilution: 1:2,000. A strong band at about 15 kDa corresponds to the α -synuclein protein in brain extracts, which are rich in syna

The key features of the new α -synuclein antibody ([C-1795-50](#)) are:

- Raised against the non-amyloid β component (NAC, 61-95) region of α -synuclein
- Validated for western blotting, immunocytochemistry and immunohistochemistry
- Superb signal with clean background
- Perfect partner for rabbit and mouse antibodies in double or triple labeling experiments
- Detects alpha-synuclein in human, mouse, rat, and numerous other species