

New NT4/5 Rapid ELISA kit!

[Biosensis](#) is proud to announce the release of a new range of *Rapid*[™] ELISA kits for the quantification of BDNF, proBDNF, NGF and now NT4/5. Get the same sensitivity and specificity that you are used to, but now quantification of your target protein requires less than 3 hours!

New neurotrophin *Rapid*[™] ELISA kits. Specific, sensitive and fast!

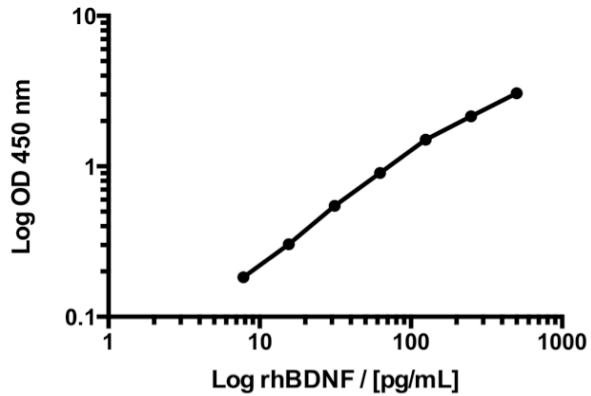
Target	Range	Human (Catalog No.)	Mouse (Catalog No.)	Rat (Catalog No.)
BDNF <i>Rapid</i> [™]	7.8-500 pg/mL	BEK-2211-2P	BEK-2211-2P	BEK-2211-2P
NGF <i>Rapid</i> [™]	3.9-250 pg/mL	BEK-2212-2P	BEK-2213-2P	BEK-2214-2P
proBDNF <i>Rapid</i> [™]	15.6-1000 pg/mL	BEK-2217-2P	BEK-2217-2P	BEK-2217-2P
NT4/5 <i>Rapid</i> [™]	15.6-1000 pg/mL	BEK-2218-2P	BEK-2218-2P	BEK-2218-2P

All of our [ELISA kits](#) are available in **1-Plate** or **2-Plate** (96/192 well) formats!

Our [ELISA kits](#) come fully equipped and are validated for a variety of sample matrices and a protocol that is easy to follow.

Comparison of the new Biosensis BDNF *Rapid*[™] ELISA kit (BEK-2211-2P) with other commercially available kits. Tick all the boxes by choosing Biosensis!

	Biosensis	Competitor 1	Competitor 2
Assay Range (pg/mL)	7.8 - 500	7.8 - 500	62.5 - 4000
Limit of Detection (pg/mL)	1-2	≤ 15.6	≤ 20
Assay Duration	< 3 hours	1.5 days	3.5 hours
All reagents included?	✓	✗	✓
Validated for serum samples?	✓	✓	✓
Validated for plasma samples?	✓	✓	✓
Validated for brain samples?	✓	✓	✗



		BDNF / [ng/mL]			Intra-Assay	Inter-Assay
		Mean	SD	SEM	CV	CV
1	Day 1	25.8	1.3	0.9	4.9%	5.3%
	Day 2	26.1	1.5	0.9	5.9%	
	Day 3	24.4	0.9	0.7	3.8%	
2	Day 1	24.9	0.4	0.3	1.7%	7.6%
	Day 2	25.1	1.8	1.1	7.3%	
	Day 3	22.0	0.5	0.4	2.3%	

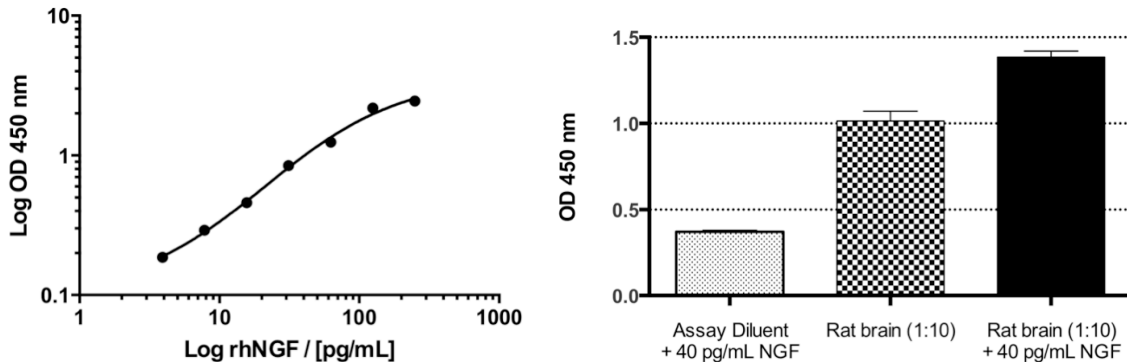
SD: standard deviation; SEM: standard error of mean; CV: coefficient of variation

Left Image: Typical BDNF standard curve obtained with Biosensis BDNF *Rapid*[™] ELISA kit ([BEK-2211-2P](#)).

Right table: Quantification of BDNF in two human serum samples. As little as 5µL serum sample is sufficient for analysis.

Comparison of the new Biosensis human NGF *Rapid*[™] ELISA kit (BEK-2212-2P) with other commercially available kits. Accelerate your research by choosing Biosensis!

	Biosensis	Competitor 1	Competitor 2
Assay Range (pg/mL)	3.9 - 250	3.9 - 250	31.2 - 2000
Limit of Detection (pg/mL)	2	7.8	Not stated
Assay Duration	< 3 hours	2.5 days	1.5 days
All reagents included?	✓	✗	✗
Validated for serum samples?	✓	✗	✗
Validated for brain samples?	✓	✓	✗



Left Image: Typical rhNGF standard curve obtained with Biosensis human NGF *Rapid*TM ELISA kit ([BEK-2212-2P](#)).

Right table: Spike and recovery experiment with NGF using [BEK-2214-2P](#) (Rat NGF *Rapid*TM). Rat brain was diluted 1:10 with assay diluent and spiked with 40 pg/mL of NGF. Almost 100% of spiked NGF was recovered. Values (mean ± SEM) are background subtracted.

Comparison of the new Biosensis proBDNF *Rapid*TM ELISA kit (BEK-2217-2P) with other commercially available kits. Tick all the boxes by choosing Biosensis!

	Biosensis	Competitor 1	Competitor 2
Assay range (ng/mL)	0.016 – 1.0	0.078 – 5.0	1.56 – 100
Limit of detection (ng/mL)	< 0.03*	Not stated	0.50
Assay duration	< 4 hours	1.5 days	5.5 hours
Cross-reactivity with mature BDNF?	2.0% (at 25 ng/mL)	1.4% (at 25 ng/mL)	0% (at 10 µg/mL)
All reagents included?	✓	✗	✓
Validated for serum samples?	✓	✗	✓
Validated for plasma samples?	✓	✗	✓

*defined as 150% of background OD at 450 nm.

Obtain reliable results by using recombinant human BDNF and NGF antigen standards approved by the WHO. Let us take your worries about accurate quantification, so you can concentrate on your research!

Visit our [ELISA kit](#) page for a full list of more than 200 ELISA kits available and stay tuned for more *Rapid*TM ELISA kits that will be added to our extensive range!

NOW AVAILABLE: New *Rapid*TM ELISA kit for p75NTR (Catalog No# [BEK-2219-2P](#)).