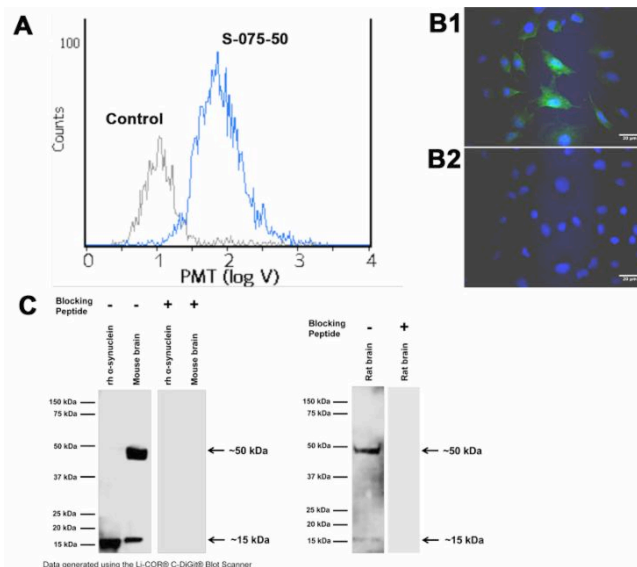


Why Choose Sheep Antibodies?

1. **Perfect choice for rodent (and human!) studies:** avoid cross-reactivity and background issues that might occur with mouse monoclonals
2. **Optimal partner for mouse and rabbit antibodies:** maximum flexibility for multi-labeling experiments
3. **Long-lasting supply – no need to continuously re-validate for your application:** sheep produce up to 30X more serum than rabbits, which reduces inherent polyclonal antibody lot-to-lot variability significantly
4. **Choice of anti-sheep and anti-goat secondary antibodies:** sheep and goat are very close relatives (use anti-goat antibodies already in your freezer!)

For nearly 30 years, Biosensis has been a trusted OEM supplier for high-quality sheep antibodies to targets such as α -synuclein ([S-075-50](#)):



Analysis of α -synuclein expression (blue) in human SHSY-5Y cells by Flow Cytometry (A), and immunocytochemistry (B1, green; B2: negative control). In Western Blotting (C), [S-075-50](#) detects α -synuclein monomer (~15 kDa) and a band at ~50 kDa, which likely represents multimeric α -synuclein protein.