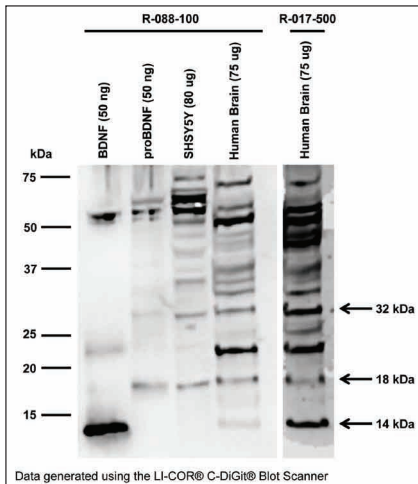


Biosensis Recommendations for BDNF Western Blot antibodies

‘Let Biosensis take care of your BDNF needs’



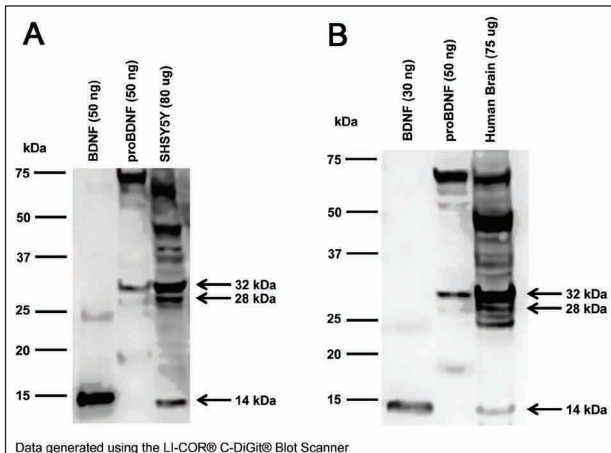
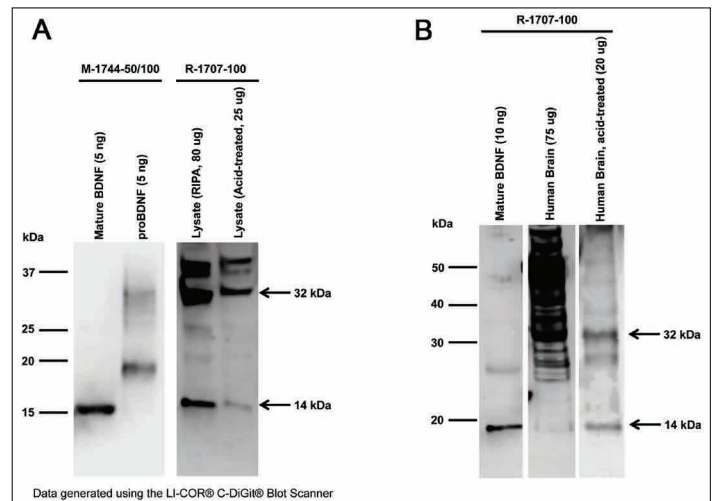
◀ **Rabbit polyclonal antibody to rhBDNF:**
Whole serum (Cat No. R-088-100)
IgG (Cat No. R-017-500)

Western blot analysis of BDNF expression in SH-SY5Y cell lysate (RIPA) and human brain tris-homogenate with polyclonal antibodies to rhBDNF (whole serum and IgG). Several BDNF isoforms are detected: 14 kDa mature BDNF monomer, 32 kDa proBDNF monomer and a 18 kDa BDNF-isoform previously described in literature. Recommended sample applications: tissue homogenate.

NEW

Rabbit polyclonal antibody to rhBDNF: affinity-purified ▶
Cat No. R-1707-100

Western blot analysis of BDNF expression in human SH-SY5Y cell lysates (A) and human brain (B) with affinity-purified rhBDNF rabbit antibody (1 µg/mL), comparing different sample preparation techniques (RIPA vs. acid-extraction, A; Tris-homogenate vs. acid-extraction, B). This antibody detects mature BDNF monomer (14 kDa) and proBDNF dimer (32 kDa) in all samples. Acid-treatment of tissue yields cleaner blots (B). Recommended sample applications: tissue homogenates and cell lysates.



◀ **Rabbit polyclonal antibody to BDNF (129-138):**
Whole serum (Cat No. R-083-100)
IgG (Cat No. R-066-500)

Western blot analysis of BDNF expression in SH-SY5Y cell lysates (A) and human brain tris-homogenates (B) with polyclonal rabbit antibody to N-terminal 1-10 BDNF peptide (R-083-100 at 1:1000 dilution is shown). This antibody detects several BDNF isoforms at 14 kDa (mature BDNF monomer), 32 kDa (glycosylated proBDNF monomer) and 28 kDa (mature BDNF dimer or truncated BDNF). Recommended sample applications: tissue homogenates, cell lysates and human serum.

Biosensis Recommendations for BDNF Western Blot antibodies

Recommended Antibodies for BDNF Western Blotting			
Cat#	Description	Recommended Sample Applications	Observed BDNF Isoforms (kDa)
M-1744-50/100	Mouse antibody to rhBDNF [Clone 4C8]: IgG	Human serum, tissue homogenates	14, 18
R-1707-100	Rabbit antibody to rhBDNF: ap	Cell lysates, tissue homogenates	14, 32
R-088-100	Rabbit antibody to rhBDNF: ws	Tissue homogenates	14, 18, 32
R-017-500	Rabbit antibody to rhBDNF: IgG		
R-083-100	Rabbit antibody to BDNF (129-138): ws	Human serum, cell lysates and tissue homogenates	14, 18, 28, 32
R-066-500	Rabbit antibody to BDNF (129-138): IgG		

14 kDa: Mature BDNF; 18 kDa: BDNF isoform; 28 kDa: BDNF dimer or truncated BDNF; 32 kDa: proBDNF monomer

BDNF

	Target	Purity	Code	Host	Reactivity	Application
	BDNF	Purified	C-1517-500	Ch	Hu, Ms	ELISA
	BDNF (rHuBDNF)	IgG	R-017-500	Rb	Hu, Rat, Ms	WB, IHC, ELISA
	BDNF (rHuBDNF)	ws	R-088-100	Rb	Hu, Rat, Ms	WB, IHC, ELISA
	BDNF (rHuBDNF)	IgG	S-015-500	Sh	Hu, Rat	IHC, ELISA
	BDNF (rHuBDNF)	ws	S-016-100	Sh	Hu, Rat, Ms	IHC
NEW	BDNF (rHuBDNF)	IgG	M-1744-100	Ms	Hu, Rat, Ms, Gp	WB, ELISA, FLOW, IF
NEW	BDNF (rHuBDNF)	IgG	M-1736-100	Ms	Hu, Rat, Ms, Gp	WB, ELISA, IF
NEW	BDNF (rHuBDNF)	ap	R-1707-100	Rb	Hu, Rat, Ms	WB, FLOW
	BDNF (129-138aa)	IgG	R-066-500	Rb	Hu, Rat	WB, IHC, ELISA
	BDNF (129-138aa)	ws	R-083-100	Rb	Hu, Rat, Ms	WB, IHC, ELISA
	BDNF (129-148aa)	ap	R-1004-100	Rb	Hu, Rat, Ms	WB