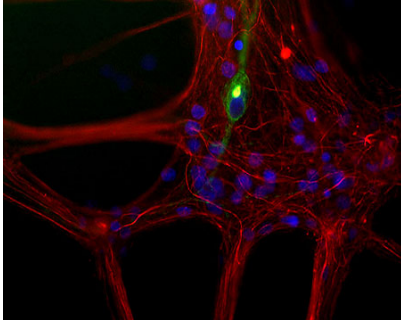


Mouse monoclonal antibody to Peripherin [7C5]

Catalogue No.:	M-1400-500
Description:	THIS PRODUCT HAS BEEN SUPERCEDED. PLEASE REFER TO THE "REPLACED BY" FIELD BELOW TO LOCATE THE CURRENT BIOSENSIS PRODUCT TO MEET YOUR RESEARCH NEEDS. Peripherin is a class-III neuronal intermediate filament protein found in certain classes of neuron, most of which are located in the peripheral nervous system.
Replaced by:	M-1400-100; affinity-purified Peripherin antibody [7C5]
Batch No.:	See product label
Unit size:	500 µl
Antigen:	Recombinant full length rat Peripherin protein expressed in and purified from E.coli
Antibody Type:	Monoclonal
Clone:	7C5
Other Names:	Peripherin; Prph; Prph1;
Accession:	P21807 PERI_RAT;
Produced in:	Mouse
Applications:	Western Blotting (WB), Immunocytochemistry (IC) and Immunohistochemistry (IH). A dilution of 1:500 - 1:1,000 is recommended for WB. A dilution of 1:200 is recommended for IC and IH. This antibody performs well on aldehyde fixed tissues. Biosensis recommends optimal dilutions/concentrations should be determined by the end user.
Specificity:	The specificity of this antibody has been confirmed by WB. This antibody detects ~57 kDa Peripherin protein.
Antibody Against:	Peripherin
Cross-reactivity:	Hu, Rat, Ms, Feline. Predicted to react with other mammalian tissue.
Form:	Lyophilised with 5% trehalose
Appearance:	White powder
Reconstitution:	Reconstitute in 500 µl sterile distilled water. Centrifuge to remove any insoluble material.
Storage:	After reconstitution of lyophilised antibody, aliquot and store at -20°C for a higher stability. Avoid freeze-thaw cycles.
Expiry Date:	12 months after purchase
Specific References:	1. Sekerková G. et al (2008) Espin actin-cytoskeletal proteins are in rat type I spiral ganglion neurons and include splice-isoforms with a functional nuclear localization signal. J Comp Neurol. 2008 Aug 20;509(6):661-76.

FOR RESEARCH USE ONLY

Mouse monoclonal antibody to Peripherin [7C5]



Mixed neuron/glia cultures from newborn rat brain stained with Mouse monoclonal antibody to Peripherin [7C5] M-1400-500 (green) and Rabbit polyclonal antibody to NF-L R-1392-50 (red channel). A class of large neurons, like the one in the middle of this image, contain peripherin, while the majority of neurons and their processes contain NF-L and not Peripherin. Interestingly, the peripherin positive cells often contain a cytoplasmic inclusion next to the nucleus which stains for both Peripherin and NF-L, and so appears golden in this kind of image. The blue channel reveals the localization of DNA.

biosensis

FOR RESEARCH USE ONLY