



Mouse monoclonal antibody to alpha Synuclein [3H9]

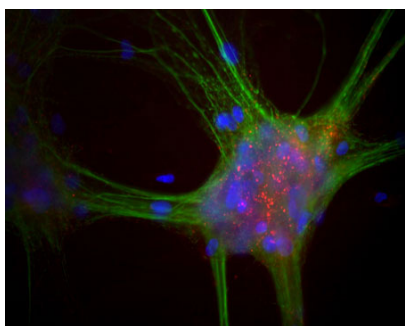
Catalogue No.:	M-1402-100
Description:	Alpha synuclein is an abundant 140 amino acid neuronal protein, expressed primarily at presynaptic terminals in the central nervous system. FUNCTION: May be involved in the regulation of dopamine release and transport. Soluble protein, normally localized primarily at the presynaptic region of axons, which can form filamentous aggregates that are the major non amyloid component of intracellular inclusions in several neurodegenerative diseases (synucleinopathies). Induces fibrillization of microtubule-associated protein tau. Reduces neuronal responsiveness to various apoptotic stimuli, leading to a decreased caspase 3 activation. TISSUE SPECIFICITY: Expressed principally in brain but is also expressed in low concentrations in all tissues examined except in liver. Concentrated in presynaptic nerve terminals. SUBUNIT: Soluble monomer which can form filamentous aggregates. Interacts with UCHL1. Interacts with phospholipase D and histones. SUBCELLULAR LOCATION: Cytoplasm. Membrane. Nucleus. Note=Membrane-bound in dopaminergic neurons. Also found in the nucleus. ALTERNATIVE PRODUCTS: 3 named isoforms produced by alternative splicing. Additional isoforms seem to exist.
Batch No.:	See product label
Unit size:	100 ug
Antigen:	Recombinant full length human alpha synuclein expressed and purified from E. coli
Antigen Location:	Multiple subcellular locations reported as well as secreted extracellularly in certain conditions.
Antibody Type:	Monoclonal
Isotype:	IgG1
Clone:	3H9
Other Names:	Non-A beta component of AD amyloid; Non-A4 component of amyloid precursor; NACP
Accession:	P37840 SYUA_HUMAN;
Produced in:	Mouse
Molecular Weight:	14-15 kDa, reduced PAGE preparations
Purity:	Protein G purified mouse IgG
Applications:	Western Blotting (WB) and Immunocytochemistry (IC/IF). A dilution of 1:1,000 - 1:5,000 is recommended for WB. A dilution of 1:500-3,000 is recommended for IC/IF. Biosensis recommends optimal dilutions/concentrations should be determined by the end user.
Specificity:	The specificity of this antibody has been confirmed by WB. This antibody detects ~14-15 kDa alpha synuclein protein. The epitope for 3H9 is in the region 61-95 which correspond to the "Non-Amyloid beta Component of Alzheimer's disease amyloid" (NAC) region. 3H9 will also bind human alpha-synuclein containing the A30P and A53T mutations.
Cross-reactivity:	Human, horse, cow, pig, chicken, rat, mouse. Predicted to react with other mammalian tissue because of highly conserved nature of the protein.
Form:	Lyophilized, from PBS with 5% trehalose and 0.05% sodium azide.
Appearance:	White powder

FOR RESEARCH USE ONLY



Mouse monoclonal antibody to alpha Synuclein [3H9]

- Reconstitution:** Reconstitute in sterile distilled water. Centrifuge to remove any insoluble material. Final buffer contains 0.05% sodium azide as a preservative
- Storage:** After reconstitution of lyophilized antibody, divide into single use aliquots and store at -20-80C for a higher stability. Avoid freeze-thaw cycles.
- Expiry Date:** 12 months after purchase
- MSDS:** Please refer to our online product listing for current protocol/MSDS versions.



Mixed neuron-glia cultures stained with Mouse monoclonal antibody to alpha Synuclein [3H9] M-1402-100 (red) and Chicken polyclonal antibody to MAP2 C-1382-50 (green). The alpha Synuclein antibody stains vesicular structures the perikarya and processes of the neurons in this image.

biosensis

FOR RESEARCH USE ONLY