



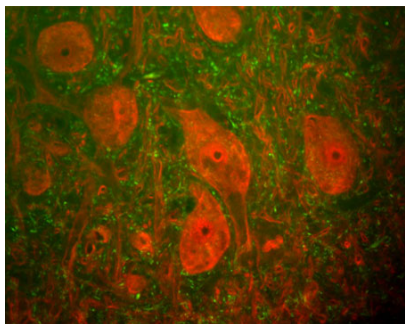
Mouse monoclonal antibody to Ubiquitin C Terminal Hydrolase 1 [BH7]

Catalogue No.:	M-1407-100
Description:	This enzyme is a thiol protease that recognizes and hydrolyzes a peptide bond at the C-terminal glycine of ubiquitin. The enzyme also binds to free monoubiquitin and may prevent its degradation in lysosomes (ref: SWISSPROT).
Batch No.:	See product label
Unit size:	100 μ L
Antigen:	Recombinant full length human Ubiquitin C Terminal Hydrolase 1 (UCHL1) purified from E. coli.
Antibody Type:	Monoclonal
Isotype:	IgG1
Clone:	BH7
Other Names:	Ubiquitin carboxyl-terminal hydrolase isozyme L1; UCH-L1; Neuron cytoplasmic protein 9.5; PGP 9.5; PGP9.5; Ubiquitin thioesterase L1; UCHL1;
Accession:	P09936 UCHL1_HUMAN;
Produced in:	Mouse
Applications:	Western Blotting (WB), Immunocytochemistry (IC) and Immunohistochemistry (IH). A dilution of 1:20,000 is recommended for WB. A dilution of 1:500 - 1:2,000 is recommended for IC and IH. Biosensis recommends optimal dilutions/concentrations should be determined by the end user.
Specificity:	The specificity of this antibody has been confirmed by WB. This antibody detects ~24 kDa UCHL1 enzyme. Suitable control tissue is rat spinal cord, brain, SHSY-5Y or HEK293 cell extract.
Antibody Against:	Ubiquitin C Terminal Hydrolase 1
Cross-reactivity:	Hu, Rat, Bov
Form:	Lyophilised with 5% trehalose
Appearance:	White powder
Reconstitution:	Reconstitute in sterile distilled water. Centrifuge to remove any insoluble material.
Storage:	After reconstitution of lyophilised antibody, aliquot and store at -20C for a higher stability. Avoid freeze-thaw cycles.
Expiry Date:	12 months after purchase

FOR RESEARCH USE ONLY



Mouse monoclonal antibody to Ubiquitin C Terminal Hydrolase 1 [BH7]



An image showing a section of rat spinal cord stained with Mouse monoclonal antibody to Ubiquitin C Terminal Hydrolase 1 [BH7] M-1407-100 (red) and Rabbit polyclonal antibody to neurofilament H R-1388-50 (green). The large cells are α -motoneurons and Ubiquitin C Terminal Hydrolase 1 (UCHL1) fills the cytoplasm of their perikarya and dendrites. The neurofilament NF-H antibody binds primarily to phosphorylated axonal forms of NF-H, and so stains axons coursing between the large motor neurons.

biosensis

FOR RESEARCH USE ONLY