



## Rabbit polyclonal antibody to Neurofilament Heavy, phosphorylated and non-phosphorylated: Whole serum

<b>Catalogue No.:</b>	R-1389-50
<b>Description:</b>	Neurofilaments contain three intermediate filament proteins: light (68 kDa), medium (160 kDa) and heavy (200 kDa). Neurofilament heavy (NF200 or NF-H) is phosphorylated and it is thought that this results in the formation of interfilament cross bridges that are important in the maintenance of axonal caliber.
<b>Batch No.:</b>	See product label
<b>Unit size:</b>	50 uL
<b>Antigen:</b>	Purified rat NF-H construct containing most of the tandem KSP repeats expressed and purified from E.coli.
<b>Antibody Type:</b>	Antiserum
<b>Other Names:</b>	NF-200; NF200; NF-H; NEFH; N52; Neurofilament heavy polypeptide; Neurofilament triplet H protein; 200 kDa neurofilament protein; KIAA0845; NFH;
<b>Accession:</b>	P12036 NFH_HUMAN;
<b>Produced in:</b>	Rabbit
<b>Applications:</b>	Western Blotting (WB) and Immunocytochemistry (IC). Suggested dilution for WB of 1:5,000-10,000. Suggested dilution for IC is 1:500-1,000. This antibody stains dendritic and perikaryal neurofilaments particularly well. Biosensis recommends optimal dilutions/concentrations should be determined by the end user.
<b>Specificity:</b>	The specificity of this antibody has been confirmed by WB. This antibody reacts with both phosphorylated NF-H at approx 200 kDa and non-phosphorylated NF-H at 160 kDa.
<b>Antibody Against:</b>	Neurofilament Heavy, phosphorylated and non-phosphorylated
<b>Cross-reactivity:</b>	Rat. Predicted to react with other mammals due to sequence homology.
<b>Form:</b>	Lyophilised
<b>Appearance:</b>	White powder
<b>Reconstitution:</b>	Reconstitute in sterile distilled water. Centrifuge to remove any insoluble material.
<b>Storage:</b>	After reconstitution of lyophilised antibody, aliquot and store at -20C for a higher stability. Avoid freeze-thaw cycles.
<b>Expiry Date:</b>	12 months after purchase

---

FOR RESEARCH USE ONLY



## **Rabbit polyclonal antibody to Neurofilament Heavy, phosphorylated and non-phosphorylated: Whole serum**

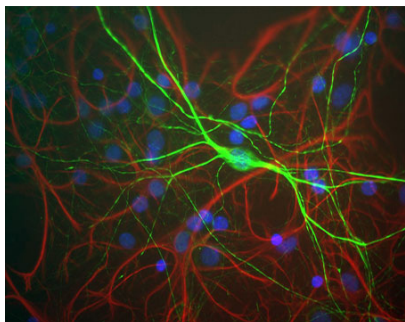


Image shows mixed neuron/glia rat brain cultures stained with Rabbit polyclonal antibody to Neurofilament Heavy R-1389-50 (green) and Chicken polyclonal antibody to Glial Fibrillary Acidic Protein C-1373-50 (red). The neurofilament NF-H antibody binds to phosphorylated axonal forms of NF-H and non-phosphorylated dendritic and perikaryal forms.

biosensis

---

FOR RESEARCH USE ONLY