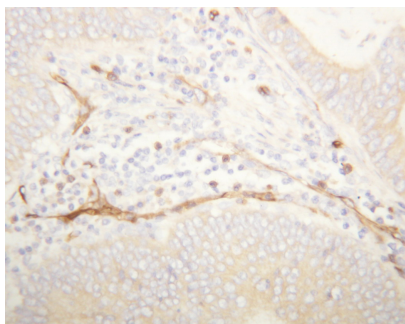




## Rabbit polyclonal antibody to human CD34 (366-382): Affinity purified

<b>Catalogue No.:</b>	R-1467-100
<b>Description:</b>	CD34 is a possible adhesion molecule with a role in early hematopoiesis by mediating the attachment of stem cells to the bone marrow extracellular matrix or directly to stromal cells (Ref: SWISSPROT).
<b>Batch No.:</b>	See product label
<b>Unit size:</b>	100 ug
<b>Antigen:</b>	A synthetic peptide corresponding to a region (366-382 aa) from human CD34.
<b>Sequence:</b>	366-382
<b>Other Names:</b>	Hematopoietic progenitor cell antigen CD34;
<b>Accession:</b>	P28906 CD34_HUMAN;
<b>Produced in:</b>	Rabbit
<b>Applications:</b>	Western Blotting (WB) and Immunohistochemistry (IHC). A concentration of 1.0 ug/mL is recommended for WB. Human CD34 (Isoform CD34-F) has a predicted length of 385 amino acids and MW of 40 kDa. A concentration of 1.0 ug/mL is recommended for IHC to detect the protein in formalin fixed and paraffin embedded tissues. Heat mediated antigen retrieval is required. A concentration of 1.0 ug/mL is also recommended for IHC in frozen tissue. Biosensis recommends optimal dilutions/concentrations should be determined by the end user.
<b>Specificity:</b>	The specificity of this antibody has been confirmed by WB and IHC against the antigen.
<b>Antibody Against:</b>	CD34
<b>Cross-reactivity:</b>	Human; rat; mouse;
<b>Form:</b>	Lyophilised with 5mg BSA, 0.9mg NaCl, 0.2mg Na <sub>2</sub> HPO <sub>4</sub> , 0.05mg Thimerosal, 0.05mg NaN <sub>3</sub>
<b>Appearance:</b>	White powder
<b>Reconstitution:</b>	Reconstitute in 100 uL of sterile distilled water to achieve an antibody concentration of 1 mg/mL. Centrifuge to remove any insoluble material.
<b>Storage:</b>	At least 12 months after purchase at 2-8C (lyophilized formulations). After reconstitution, aliquot and store at -20C for a higher stability. Avoid freeze-thaw cycles.
<b>Expiry Date:</b>	12 months after purchase



Immunohistochemical staining (paraffin) of human mammary cancer tissue with Rabbit polyclonal antibody to human CD34 (R-1467-100).

FOR RESEARCH USE ONLY