

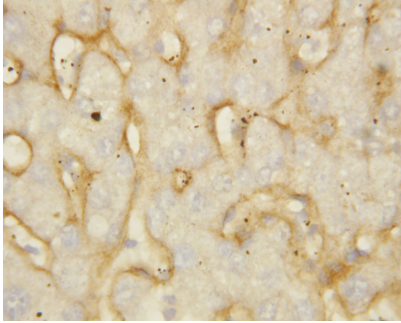
## Rabbit polyclonal antibody to human Serine/threonine kinase 11 (421-433): Affinity purified

<b>Catalogue No.:</b>	R-1480-100
<b>Description:</b>	THIS PRODUCT HAS BEEN SUPERCEDED. PLEASE REFER TO THE "REPLACED BY" FIELD BELOW TO LOCATE THE CURRENT BIOSENSIS PRODUCT TO MEET YOUR RESEARCH NEEDS. Serine/threonine kinase 11 phosphorylates and activates members of the AMPK-related subfamily of protein kinases (Ref: SWISSPROT).
<b>Batch No.:</b>	See product label
<b>Unit size:</b>	100 ug
<b>Antigen:</b>	A synthetic peptide corresponding to a region (421-433 aa) from human Serine/threonine kinase 11 (STK11).
<b>Antigen Location:</b>	421-433
<b>Other Names:</b>	Renal carcinoma antigen NY-REN-19; Serine/threonine-protein kinase LKB1; STK11; PJS;
<b>Accession:</b>	Q15831 STK11_HUMAN;
<b>Produced in:</b>	Rabbit
<b>Applications:</b>	Western Blotting (WB) and Immunohistochemistry (IHC). A concentration of 1.0 ug/mL is recommended for WB. Human STK11 has a predicted length of 433 amino acids and MW of 49 kDa. A concentration of 1.0 ug/mL is recommended for IHC to detect the protein in formalin fixed and paraffin embedded tissues. Heat mediated antigen retrieval is required. Biosensis recommends optimal dilutions/concentrations should be determined by the end user.
<b>Specificity:</b>	The specificity of this antibody has been confirmed by WB (Human, Rat) and IHC (Human, Rat, Mouse) against the antigen.
<b>Antibody Against:</b>	Serine/threonine kinase 11
<b>Cross-reactivity:</b>	Human; rat; mouse;
<b>Form:</b>	Lyophilised with 5mg BSA, 0.9mg NaCl, 0.2mg Na <sub>2</sub> HPO <sub>4</sub> , 0.05mg Thimerosal, 0.05mg Na <sub>3</sub>
<b>Appearance:</b>	White powder
<b>Reconstitution:</b>	Reconstitute in 100 uL of sterile distilled water to achieve an antibody concentration of 1 mg/mL. Centrifuge to remove any insoluble material.
<b>Storage:</b>	At least 12 months after purchase at 2-8C (lyophilized formulations). After reconstitution, aliquot and store at -20C for a higher stability. Avoid freeze-thaw cycles.
<b>Expiry Date:</b>	12 months after purchase

---

FOR RESEARCH USE ONLY

## **Rabbit polyclonal antibody to human Serine/threonine kinase 11 (421-433): Affinity purified**



Immunohistochemical staining (paraffin) of human liver cancer tissue with Rabbit polyclonal antibody to human Serine/threonine kinase 11 (R-1480-100).

biosensis

---

FOR RESEARCH USE ONLY