

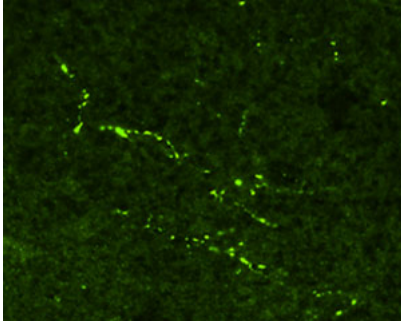
## Rabbit polyclonal antibody to human beta Endorphin (1-31)

<b>Catalogue No.:</b>	R-1492-50
<b>Description:</b>	Human beta-endorphin is a 31 amino acid peptide cleaved from the precursor pro-opiomelanocortin (POMC). It is an endogenous opioid peptide neurotransmitter that interacts with opioid receptors.
<b>Batch No.:</b>	See product label
<b>Unit size:</b>	50 ug
<b>Antigen:</b>	Synthetic human beta-endorphin peptide (1-31 aa) conjugated to BSA.
<b>Sequence:</b>	YGGFMTSEKSQTPLVTLFKNAIIKNAYKKGE
<b>Antigen Location:</b>	1-31 aa
<b>Other Names:</b>	-endorphin; Pro-opiomelanocortin; POMC;
<b>Accession:</b>	P01189 COLI_HUMAN;
<b>Produced in:</b>	Rabbit
<b>Applications:</b>	A dilution of 5-10 ug/mL is recommended for immunohistochemistry using formalin fixed and paraffin embedded tissues and for 4% paraformaldehyde fixed frozen tissues. A dilution of 5-15 ug/mL is recommended for immunofluorescence. For radioimmunoassay (RIA), a working dilution of 1:10,000 is recommended. Sensitivity - 120 pg/sample; IC50-1 ng/ sample. Biosensis recommends optimal dilutions/concentrations should be determined by the end user.
<b>Specificity:</b>	Confirmed by RIA against the synthetic peptide.
<b>Species Against:</b>	Human
<b>Antibody Against:</b>	beta Endorphin
<b>Cross-reactivity:</b>	Human; mouse; rat. Beta-endorphin is highly conserved so cross-reactivity with other species is expected. Cross-reactivity with other opioid peptides is as follows: with Met-enkephalin 0.03%; with Leu-enkephalin 0.02%; with beta-lipotropin 0.34%.
<b>Form:</b>	Lyophilised with BSA
<b>Appearance:</b>	White powder
<b>Reconstitution:</b>	Reconstitute in 0.05 mL of PBS (pH 7.4). Centrifuge to remove any insoluble material.
<b>Storage:</b>	At least 12 months after purchase at 2-8C (lyophilized formulations). After reconstitution, aliquot and store at -20C for a higher stability and at 2-8C with an appropriate antibacterial agent. Avoid freeze-thaw cycles
<b>Expiry Date:</b>	12 months after purchase

---

FOR RESEARCH USE ONLY

## Rabbit polyclonal antibody to human beta Endorphin (1-31)



Immunohistochemical staining in rat ventral periaqueductal grey matter (PAG). 4% paraformaldehyde fixed rat brain cryostat sections (10  $\mu$ m) were incubated overnight at 4°C with Rabbit polyclonal antibody to human beta Endorphin (10  $\mu$ g/ml) followed by incubation with FITC conjugated secondary antibody.

biosensis

---

FOR RESEARCH USE ONLY