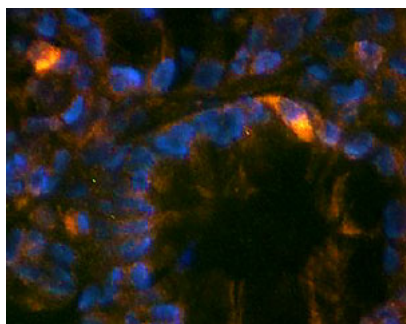




## Rabbit polyclonal antibody to human Gastrin (76-85)

<b>Catalogue No.:</b>	R-1497-50
<b>Description:</b>	Human Gastrin is a 101 amino acid hormone produced by G cells of the duodenum, stomach and pancreas. It stimulates secretion of hydrochloric acid by parietal cells of the stomach. Gastrin is also secreted into bloodstream.
<b>Batch No.:</b>	See product label
<b>Unit size:</b>	50 ug
<b>Antigen:</b>	Synthetic human Gastrin peptide (76-85 aa) conjugated to BSA.
<b>Sequence:</b>	QGPWLEEEEE
<b>Antigen Location:</b>	76-85
<b>Other Names:</b>	GAST; GAS; G14; G17; G34; G52; G6; GAST_HUMAN; Gastrin component I; Gastrin component II; Gastrin component III; Gastrin precursor; Gastrin-17; Gastrin-34; Gastrin-6;
<b>Accession:</b>	P01350 GAST;
<b>Produced in:</b>	Rabbit
<b>Applications:</b>	A dilution of 5-10 ug/mL is recommended for immunohistochemistry using formalin fixed and paraffin embedded tissues and for 4% paraformaldehyde fixed frozen tissues. A dilution of 5-15 ug/mL is recommended for immunofluorescence. Biosensis recommends optimal dilutions/concentrations should be determined by the end user.
<b>Species Against:</b>	Human
<b>Antibody Against:</b>	Gastrin
<b>Cross-reactivity:</b>	Human, mouse, rat
<b>Form:</b>	Lyophilised with BSA
<b>Appearance:</b>	White powder
<b>Reconstitution:</b>	Reconstitute in 0.05 mL of PBS (pH 7.4). Centrifuge to remove any insoluble material.
<b>Storage:</b>	At least 12 months after purchase at 2-8C (lyophilized formulations). After reconstitution, aliquot and store at -20C for a higher stability and at 2-8C with an appropriate antibacterial agent. Avoid freeze-thaw cycles
<b>Expiry Date:</b>	12 months after purchase



Immunohistochemical staining in G cells of rat gastric glands. 4% paraformaldehyde fixed rat stomach cryostat sections (10  $\mu$ m) were incubated overnight at 4°C with Rabbit polyclonal antibody to human Gastrin (10  $\mu$ g/ml) followed by incubation with donkey anti-rabbit Rhodamine Red conjugated secondary antibody (1:200). Cell nuclei were counterstained with DAPI.

FOR RESEARCH USE ONLY