



## Rabbit antibody to rh NTN (Neurturin): whole serum

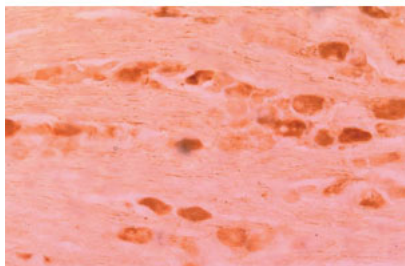
|                          |  |
|--------------------------|--|
| <b>Catalogue No.:</b>    | R-1561-100   |
| <b>Description:</b>      | Neurturin (NTN) is a member of the GDNF family of neurotrophic factors. This protein is a potent survival factor for several populations of central and peripheral neurons in mature and developing rodents. <b>FUNCTION:</b> Supports the survival of sympathetic neurons in culture. May regulate the development and maintenance of the CNS. Might control the size of non-neuronal cell population such as haemopoietic cells. <b>SUBUNIT:</b> Homodimer; disulfide-linked. <b>SUBCELLULAR LOCATION:</b> Secreted protein. <b>DISEASE:</b> Defects in NRTN are a cause of Hirschsprung disease (HSCR). In association with mutations of RET gene, and possibly with other loci, defects in NRTN are involved in Hirschsprung disease. This genetic disorder of neural crest development is characterized by the absence of intramural ganglion cells in the hindgut, often resulting in intestinal obstruction. <b>SIMILARITY:</b> Belongs to the TGF-beta family. GDNF subfamily. |
| <b>Batch No.:</b>        | See product label  |
| <b>Unit size:</b>        | 100 uL   |
| <b>Antigen:</b>          | Recombinant human Neurturin (rh NTN)   |
| <b>Other Names:</b>      | NRTN; NTN;   |
| <b>Accession:</b>        | Q99748 NRTN_HUMAN;   |
| <b>Produced in:</b>      | Rabbit   |
| <b>Purity:</b>           | Whole serum  |
| <b>Applications:</b>     | Immunohistochemistry (IHC) at a suggested dilution of 1:2000. Biosensis recommends optimal dilutions/concentrations should be determined by the end user.  |
| <b>Specificity:</b>      | Specificity of this product was demonstrated by immunohistochemistry and dot blot showed no cross reactivity with GDNF.  |
| <b>Cross-reactivity:</b> | This antibody is known to react with human, mouse and rat.   |
| <b>Form:</b>             | Lyophilised  |
| <b>Reconstitution:</b>   | Reconstitute in 100 uL of sterile water. Centrifuge to remove any insoluble material.  |
| <b>Storage:</b>          | After reconstitution keep aliquots at -20C for a higher stability, and at 2-8C with an appropriate antibacterial agent. Glycerol (1:1) may be added for an additional stability. Avoid repetitive freeze/thaw cycles.  |
| <b>Expiry Date:</b>      | 12 months after purchase   |

---

FOR RESEARCH USE ONLY



## Rabbit antibody to rh NTN (Neurturin): whole serum



IHC staining of Rabbit antibody to Neurturin (R-1561-100) in rat dorsal root ganglia (at 1:1,000).

biosensis

---

FOR RESEARCH USE ONLY