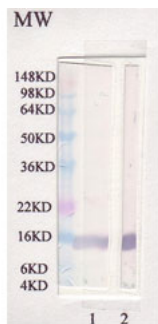




## Chicken polyclonal antibody to rat Leptin

<b>Catalogue No.:</b>	C-1515-500
<b>Description:</b>	Leptin is secreted by white adipocytes and functions as part of a signaling pathway that can inhibit food intake and/or regulate energy expenditure to maintain constancy of the adipose mass. Leptin also has several endocrine functions and is involved in the regulation of immune and inflammatory responses, hematopoiesis, angiogenesis and wound healing (Ref: Entrez Gene) .
<b>Batch No.:</b>	See product label
<b>Unit size:</b>	500 uL
<b>Antigen:</b>	Recombinant rat Leptin protein
<b>Other Names:</b>	Leptin; Obesity factor; Lep; Ob; Obese protein;
<b>Accession:</b>	P50596 LEP_RAT;
<b>Produced in:</b>	Chicken
<b>Applications:</b>	ELISA and WB. Suggested dilution of 1:1,000-1:5,000. Biosensis recommends that the optimal working dilution should be determined by the end user.
<b>Cross-reactivity:</b>	Rat, Mouse
<b>Form:</b>	Liquid. PBS with 0.02% Sodium Azide
<b>Storage:</b>	Short term storage at 2-8C for one week. At -20C as an undiluted liquid for up to 12 months.
<b>Expiry Date:</b>	12 months after purchase



Western blot analysis of leptin in Rat. Lane 1: Rabbit polyclonal antibody to rat Leptin (R-1553-100) at 1:1,000 Lane 2: Chicken polyclonal antibody to rat Leptin (C-1515-500) at 1:1,000

FOR RESEARCH USE ONLY