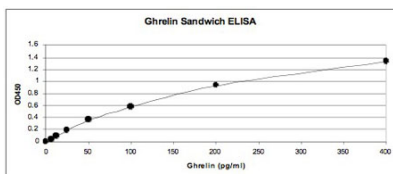




Chicken polyclonal antibody to Ghrelin (17-28): Affinity purified

Catalogue No.:	C-1519-200
Description:	Ghrelin is the ligand for growth hormone secretagogue receptor type 1 (GHSR) and upon binding to the receptor it induces the release of growth hormone from the pituitary. This ligand has an appetite-stimulating effect and is involved in growth regulation (Ref: SWISSPROT).
Batch No.:	See product label
Unit size:	200 uL
Antigen:	Synthetic peptide from human Ghrelin (17-28 aa).
Sequence:	ESKKPPAKLQPR
Other Names:	Appetite-regulating hormone; Growth hormone secretagogue; Growth hormone-releasing peptide; Motilin-related peptide; GHRL; MTLRP; M46 protein; Ghrelin-27; Ghrelin-28; Obestatin;
Accession:	Q9UBU3 GHRL_HUMAN;
Produced in:	Chicken
Applications:	ELISA. Suggested dilution at 1:500 to 1:2,000. Biosensis recommends that the optimal working dilution should be determined by the end user.
Cross-reactivity:	Human, Mouse, Rat
Form:	Liquid. PBS with 0.02% Sodium Azide
Storage:	Short term storage at 2-8C for one week. At -20C as an undiluted liquid for up to 12 months.
Expiry Date:	12 months after purchase



Analysis of Ghrelin in Sandwich ELISA. Coating antibody was Chicken polyclonal antibody to Ghrelin (C-1519-200) and the detection antibody was Chicken polyclonal antibody to active Ghrelin (C-1525-200).

FOR RESEARCH USE ONLY