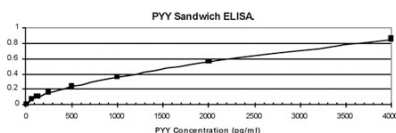


Chicken polyclonal antibody to Peptide YY (24-36): Affinity purified, biotinylated

Catalogue No.:	C-1537-100
Description:	Peptide YY (PYY) is secreted from endocrine cells in the lower small intestine, colon and pancreas. PYY inhibits exocrine pancreatic secretion, has a vasoconstrictory action and inhibits jejunal and colonic mobility (Ref: SWISS-Prot).
Batch No.:	See product label
Unit size:	100 uL
Antigen:	A peptide from the C-terminus of human mature Peptide YY (24-36 aa) .
Sequence:	LRHYLNLVTRQRY
Other Names:	PYY; PYY-I; Peptide tyrosine tyrosine; Peptide YY(3-36);
Accession:	P10082 PYY_HUMAN;
Produced in:	Chicken
Applications:	ELISA . Suggested dilution at 1:2,000 to 1:10,000 (detection antibody). Biosensis recommends that the optimal working dilution should be determined by the end user.
Cross-reactivity:	Human, Mouse, Rat
Form:	Liquid. PBS with 0.02% Sodium Azide
Storage:	Short term storage at 2-8C for one week. At -20C as an undiluted liquid for up to 12 months.
Expiry Date:	12 months after purchase



Analysis of PYY in Sandwich ELISA. Coating antibody was Chicken polyclonal antibody to human Peptide YY (C-1538-100) at 1:400. The detection antibody was Chicken polyclonal antibody to Peptide YY, biotinylated (C-1537-100) at 1:5,000.

FOR RESEARCH USE ONLY