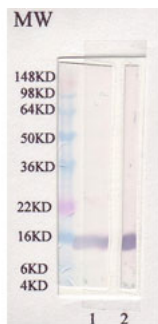


Rabbit polyclonal antibody to rat Leptin: Whole serum

Catalogue No.:	R-1553-100
Description:	Leptin is secreted by white adipocytes and functions as part of a signaling pathway that can inhibit food intake and/or regulate energy expenditure to maintain constancy of the adipose mass. Leptin has a variety of other roles including endocrine functions, regulation of immune and inflammatory responses, hematopoiesis, angiogenesis and wound healing (Ref Entrez Gene).
Batch No.:	See product label
Unit size:	100 uL
Antigen:	Recombinant rat Leptin protein
Other Names:	Leptin; Obesity factor; Lep; Ob; Obese protein;
Accession:	P41159 LEP_HUMAN;
Produced in:	Rabbit
Applications:	WB and ELISA. Suggested dilution of 1:1,000-1:4,000. Biosensis recommends that the optimal working dilution should be determined by the end user.
Cross-reactivity:	Mouse, Rat
Form:	Liquid. PBS with 0.02% Sodium Azide
Storage:	Short term storage at 2-8C for one week. At -20C as an undiluted liquid for up to 12 months.
Expiry Date:	12 months after purchase



Western blot analysis of leptin in Rat. Lane 1: Rabbit polyclonal antibody to rat Leptin (R-1553-100) at 1:1,000 Lane 2: Chicken polyclonal antibody to rat Leptin (C-1515-500) at 1:1,000

FOR RESEARCH USE ONLY