



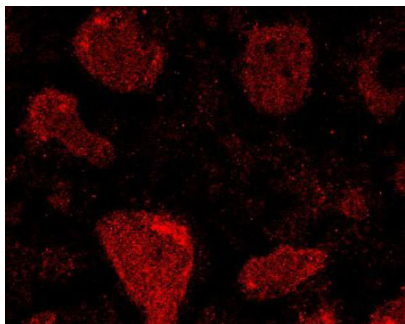
Rabbit polyclonal antibody to glutathione peroxidase 1 (GPx-1) [175-194]: whole serum

Catalogue No.:	R-1588-100
Description:	Glutathione peroxidase 1 has a role in detoxification of hydrogen peroxide and is one of the most important antioxidant enzymes in humans. It exists as a homotetramer which localises to the cytoplasm. It belongs to the glutathione peroxidase family. Glutathione peroxidase 1 is one of few proteins in higher vertebrates to contain selenocysteine, which occurs at the active site of glutathione peroxidase and is coded by UGA, that normally functions as a translation termination codon. This protein has a polyalanine sequence polymorphism in the N-terminal region, which includes three alleles with five, six or seven alanine repeats. The allele with five alanine repeats is significantly associated with breast cancer risk. At least two alternatively spliced isoforms have been identified.
Batch No.:	See product label
Unit size:	100 uL
Antigen:	A synthetic peptide (RRYSRRFQTIDIEPDIEALL) corresponding to the amino acids 175-194 of human glutathione peroxidase 1 (GPx-1) conjugated to diphtheria toxin has been used as the immunogen.
Antibody Type:	Polyclonal
Other Names:	Glutathione peroxidase 1; GPx-1; GSHPx-1; Cellular glutathione peroxidase; GPX1;
Accession:	P07203 GPX1_HUMAN;
Produced in:	Rabbit
Applications:	IHC, WB and ELISA. This antibody works superbly in IHC on frozen or wax embedded tissues. Antigen retrieval has been used in testing but may not be necessary. Typical working dilutions for routine IHC are 1: 200 to 1: 1,000 depending on tissue and detection method. For WB a dilution range of 1: 1,000 to 1: 4,000 is recommended. For ELISA, a dilution of 1: 1,000 to 1: 4,000 is recommended. This antiserum has extremely high titre, it stains human and rat glial cells intensely and to some extent also stains neurons. Other tissues have not yet been tested. On WB under reducing conditions recognises a 22kD protein in human brain tissue and Sigma glutathione peroxidase (G-4013) isolated from human erythrocytes. Biosensis recommends optimal dilutions/concentrations should be determined by the end user.
Specificity:	Human and rat cellular selenium dependent glutathione peroxidase.
Cross-reactivity:	Human; rat;
Form:	Lyophilized serum with 0.02% thimerosal
Reconstitution:	Reconstitute in sterile distilled water. Centrifuge to remove any insoluble material.
Storage:	At least 12 months after purchase at 2-8C (lyophilized formulations). After reconstitution, aliquot and store at -20C for a higher stability. Avoid freeze-thaw cycles.

FOR RESEARCH USE ONLY



Rabbit polyclonal antibody to glutathione peroxidase 1 (GPx-1) [175-194]: whole serum



Immunohistochemical staining of neurons in rat brain tissue. Incubated with Rabbit polyclonal antibody to glutathione peroxidase 1 (R-1588-100) at 1:100. Secondary antibody donkey anti-rabbit conjugated to Cy3 at 1:100.

biosensis

FOR RESEARCH USE ONLY