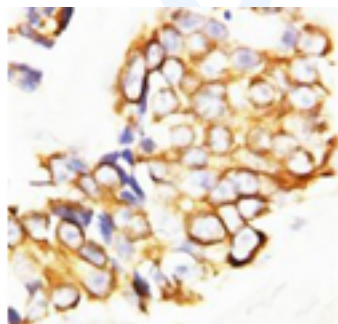




Rabbit polyclonal antibody to Annexin I (3-24): Affinity purified

Catalogue No.:	R-1624-100
Description:	Annexin I, also known as Annexin A1, belongs to the annexin family of calcium dependent phospholipid binding proteins.
Batch No.:	See product label
Unit size:	100 µg
Antigen:	A synthetic peptide (MVSEFLKQAWFIENEEQEYVQT) corresponding to a region (3-24) from the N-terminus of human Annexin I.
Other Names:	Annexin A1; ANXA1; ANX1; LPC1; Lipocortin I; Calpactin II; Chromobindin-9; Phospholipase A2 inhibitory protein; p35;
Accession:	P04083 ANXA1_HUMAN;
Produced in:	Rabbit
Purity:	Affinity purified on antigen column
Applications:	Immunohistochemistry (IHC) and Western Blotting (WB). A concentration of 0.1-0.5 µg/mL is recommended for WB. Human Annexin I (precursor) has a predicted length of 346 residues and a MW of 39 kDa. A concentration of 0.5-2.0 µg/mL is recommended to detect Annexin I in formalin fixed and paraffin embedded tissues. Heat mediated antigen retrieval is required. Biosensis recommends optimal dilutions/concentrations should be determined by the end user.
Specificity:	The specificity of this antibody has been confirmed by WB and IHC against the antigen.
Cross-reactivity:	Human;
Form:	Lyophilised with 5mg BSA, 0.9mg NaCl, 0.2mg Na ₂ HPO ₄ , 0.05mg Thimerosal, 0.05mg Na ₃
Reconstitution:	Reconstitute in 100 µL of sterile distilled water to achieve an antibody concentration of 1 mg/mL. Centrifuge to remove any insoluble material.
Storage:	At least 12 months after purchase at 2-8C (lyophilized formulations). After reconstitution, aliquot and store at -20C for a higher stability. Avoid freeze-thaw cycles
Expiry Date:	12 months after purchase



Immunohistochemical staining with Rabbit polyclonal antibody to Annexin I (R-1624-100) at 2 µg/ml in Human Mammary Cancer Tissue. Secondary biotin conjugated goat anti-rabbit IgG antibody at 10 µg/ml.

FOR RESEARCH USE ONLY