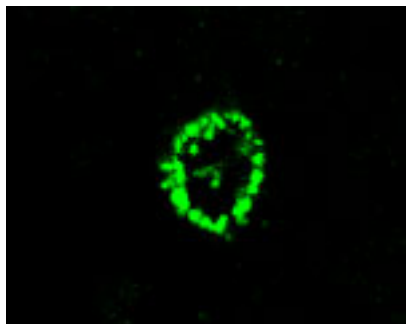




Rabbit antibody to ATG12: whole serum

| | |
|--------------------------|---|
| Catalogue No.: | R-112-100 |
| Description: | FUNCTION: Required for autophagy. SUBUNIT: Conjugated to ATG5. SUBCELLULAR LOCATION: Cytoplasm. ALTERNATIVE PRODUCTS: 2 named isoforms produced by alternative splicing. TISSUE SPECIFICITY: Ubiquitous. SIMILARITY: Belongs to the ATG12 family. |
| Batch No.: | See product label |
| Unit size: | 100 uL |
| Antigen: | A synthetic peptide corresponding to the N-terminal of human ATG12 protein has been used as the immunogen. No immunogenic carrier protein was conjugated to the immunogen. Instead, Adjuvane B (see the Adjuvants in biosensis' product list) has been used to orchestrate/boost the immune response. |
| Other Names: | Autophagy-related protein 12; APG12-like; APG 12; ATG12; APG12; APG12L |
| Accession: | ATG12_HUMAN |
| Produced in: | Rabbit |
| Purity: | Whole serum |
| Applications: | IHC, immunofluorescence, WB. A dilution of 1:200 to 1:1000 dilution is recommended for these applications. Biosensis recommends optimal dilutions/concentrations should be determined by the end user. |
| Specificity: | IHC and WB confirmed the specificity for ATG12. |
| Cross-reactivity: | Human, rat |
| Form: | Lyophilised |
| Reconstitution: | Reconstitute in 100 uL of sterile water. Centrifuge to remove any insoluble material. |
| Storage: | After reconstitution keep aliquots at -20C for a higher stability, and at 2-8C with an appropriate antibacterial agent. Glycerol (1:1) may be added for an additional stability. Avoid repetitive freeze/thaw cycles. |
| Expiry Date: | Six months after purchase |
| References: | 1. Mizushima, N. et al. J. Biol. Chem. 273(51):33889-33892 (1998). 2. Tanida, I. et al. Biochem. Biophys. Res. Commun. 296(5):1164-1170 (2002). 3. Tanida, I. et al. J. Biol. Chem. 277(16):13739-13744 (2002). |



Confocal microscopy on stained ATG12 using Rabbit antibody to ATG12: whole serum (R-112-100) in paraffin embedded human brain section (midfrontal cortex, Alzheimer case).

FOR RESEARCH USE ONLY