



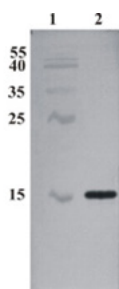
## Rabbit antibody to human CDNF (conserved dopamine neurotrophic factor)

<b>Catalogue No.:</b>	R-1674-100
<b>Description:</b>	CDNF (conserved dopamine neurotrophic factor) is a trophic factor for midbrain dopamine neurons in vivo. It prevents the 6-OHDA- (Lindholm et al. 20007; Voutilainen et al., 2011) and MPTP-induced degeneration (Airavaara et al., 2012) of dopamine neurons in rodent models of Parkinson's disease. When administered after 6-OHDA or MPTP -lesioning it restores the dopaminergic function and prevents degeneration of dopamine neurons in substantia nigra pars compacta.
<b>Related products:</b>	M-1676-100; M-1677-100; BEK-2212-2P ELISA
<b>Batch No.:</b>	See product label
<b>Unit size:</b>	100 ug
<b>Antigen:</b>	Recombinant human CDNF protein produced using CHO-based cell line. Purified from cell culture supernatant.
<b>Sequence:</b>	whole molecule, Uniprot Q49AH0
<b>Antibody Type:</b>	Polyclonal
<b>Isotype:</b>	IgG
<b>Other Names:</b>	ARMETL1
<b>Accession:</b>	Q49AH0
<b>Produced in:</b>	Rabbit
<b>Molecular Weight:</b>	~15kDa reducing gel, mature forms
<b>Purity:</b>	Affinity purified
<b>Applications:</b>	Western blot (WB) at a suggested dilution of 1:6,000 - 1:10,000. Biosensis recommends optimal dilutions/concentrations should be determined by the end user.
<b>Specificity:</b>	CDNF (conserved dopamine neurotrophic factor)
<b>Species Against:</b>	Human
<b>Form:</b>	Concentrated ammonium sulphate in PBS pH 7.4 containing no preservatives.
<b>Reconstitution:</b>	Store antibody stock solution at 2-8C upon receipt. DO NOT FREEZE. This product is an (NH <sub>4</sub> ) <sub>2</sub> SO <sub>4</sub> precipitate. To use, mix well by pipetting or vortexing gently prior use, then withdraw the desired amount of antibody stock solution and dilute into your antibody dilution buffer and use normally. Alternatively, material can be centrifuged at 10K x g for 5 minutes and the liquid sulfate solution carefully removed. Then precipitated antibody can be resuspended in 0.1M P, 250mM NaCL, pH 7.4 solution. The solution should then be divided into working aliquots and stored at -80C until used. Prevent multiple freeze thaw cycles of aliquots for best product life.
<b>Storage:</b>	Store at 2-8C upon receipt; Do not freeze. See reconstitution instructions for handling information.
<b>Expiry Date:</b>	12 months after purchase

FOR RESEARCH USE ONLY



## Rabbit antibody to human CDFN (conserved dopamine neurotrophic factor)



Western Blot testing of rabbit anti-CDFN antibody. Line 1. PageRuler Prestained Protein Ladder (#SM0671 Fermentas); Line 2. Recombinant CDFN expressed into the supernatant of CHO cell culture medium.

biosensis

---

FOR RESEARCH USE ONLY