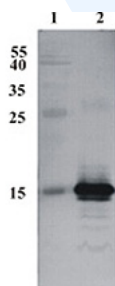


## Mouse antibody to human CDNF (conserved dopamine neurotrophic factor) [6G5]: IgG

<b>Catalogue No.:</b>	M-1676-100
<b>Description:</b>	CDNF (conserved dopamine neurotrophic factor) is a trophic factor for midbrain dopamine neurons in vivo. It prevents the 6-OHDA- (Lindholm et al. 20007; Voutilainen et al., 2011) and MPTP-induced degeneration (Airavaara et al., 2012) of dopamine neurons in rodent models of Parkinsonâ€™s disease. When administered after 6-OHDA or MPTP â€™lesioning it restores the dopaminergic function and prevents degeneration of dopamine neurons in substantia nigra pars compacta.
<b>Batch No.:</b>	See product label
<b>Unit size:</b>	100 ug
<b>Antigen:</b>	Recombinant human CDNF protein produced using CHO-based cell line. Purified from cell culture supernatant.
<b>Antibody Type:</b>	Monoclonal
<b>Isotype:</b>	IgG1
<b>Other Names:</b>	ARMETL1
<b>Produced in:</b>	Mouse
<b>Purity:</b>	Purified by protein G affinity chromatography
<b>Applications:</b>	Western blot (WB) at a suggested dilution of 1:2,000 - 1:4,000. Biosensis recommends optimal dilutions/concentrations should be determined by the end user.
<b>Specificity:</b>	CDNF (conserved dopamine neurotrophic factor)
<b>Species Against:</b>	Human
<b>Form:</b>	PBS pH 7.4, with 0.1% sodium azide.
<b>Storage:</b>	Store at -20C or -70C upon receipt. After opening maintain undiluted in smaller aliquots at -20C or -70 C for up to 6 months. Avoid multiple freeze-thaw cycles.
<b>Expiry Date:</b>	Unopened, 12 months after purchase.



Western Blot testing of anti-CDNF antibody. Line 1. PageRuler Prestained Protein Ladder (#SM0671 Fermentas); Line 2. Recombinant CDNF expressed into the supernatant of CHO cell culture medium.

FOR RESEARCH USE ONLY