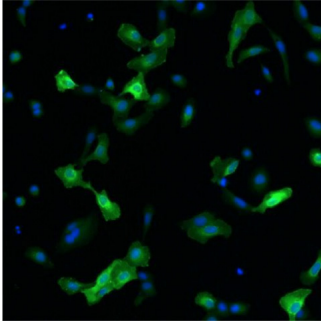


Chicken antibody to human RET: affinity purified

Catalogue No.:	C-1663-100
Description:	The RET proto-oncogene is a receptor tyrosine kinase for members of the glial cell line-derived neurotrophic factor family of extracellular signalling molecules
Related products:	M-918-100 mouse monoclonal antibody to human RET [1C6]: IgG;
Batch No.:	See product label
Unit size:	100 ug
Antigen:	Recombinant His-tagged extracellular fragment of human RET protein produced using CHO cell line. The extracellular fragment of hRET was expressed and secreted to the cell culture supernatant. Protein was purified by Ni-affinity chromatography following gel-filtration from cell culture supernatant.
Antibody Type:	Polyclonal
Isotype:	IgY
Other Names:	Proto-oncogene tyrosine-protein kinase receptor Ret, Cadherin family member 12, Proto-oncogene c-Ret
Produced in:	Chicken
Purity:	affinity purified
Applications:	WB, ICC. A dilution of 1:5 000 to 1:10 000 is recommended for Western blot and 1:250 to 1:500 for immunocytochemistry. Biosensis recommends optimal dilutions/concentrations should be determined by the end user.
Specificity:	Human RET
Species Against:	Human
Form:	Liquid: Concentrated ammonium sulphate in PBS pH 7.4
Appearance:	Clear liquid
Reconstitution:	Store antibody stock solution at 2-8C upon receipt. DO NOT FREEZE. This product is an (NH ₄) ₂ SO ₄ precipitate. To use, mix well by pipetting or vortexing gently prior use, then withdraw the desired amount of antibody stock solution and dilute into your antibody dilution buffer and use normally. Alternatively, material can be centrifuged at 10K x g for 5 minutes and the liquid sulfate solution carefully removed. Then precipitated antibody can be resuspended in 0.1M P, 250mM NaCL, pH 7.4 solution. The solution should then be divided into working aliquots and stored at -80C until used. Prevent multiple freeze thaw cycles of aliquots for best product life.
Storage:	Store at 2-8C upon receipt; DO NOT FREEZE. As product is (NH ₄) ₂ SO ₄ (ammonium sulfate) precipitate, mix well by pipetting or vortexing prior to use. See reconstitution instructions for more information.
Expiry Date:	12 months after purchase

FOR RESEARCH USE ONLY

Chicken antibody to human RET: affinity purified



Immunofluorescence detection of human RET expressed in U2OS cells. RET was visualized using Chicken polyclonal antibody to human RET (dilution 1:500) and Goat anti-chicken IgY - H&L DyLight 550 (dilution 1:200) as secondary antibody. For nuclear staining DAPI was used. Composite picture was generated using pseudocolors green for RET specific signal and blue for nuclei.

biosensis

FOR RESEARCH USE ONLY