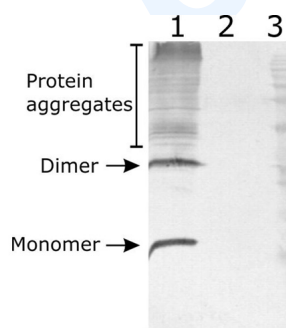


## Rabbit polyclonal antibody to rh NTN (Neurturin): IgG

<b>Catalogue No.:</b>	R-1669-100
<b>Description:</b>	Neurturin (NTN) is a member of the GDNF family of neurotrophic factors. This protein is a potent survival factor for several populations of central and peripheral neurons in mature and developing rodents. <b>FUNCTION:</b> Supports the survival of sympathetic neurons in culture. May regulate the development and maintenance of the CNS. Might control the size of non-neuronal cell population such as haemopoietic cells. <b>SUBUNIT:</b> Homodimer; disulfide-linked. <b>SUBCELLULAR LOCATION:</b> Secreted protein. <b>DISEASE:</b> Defects in NRTN are a cause of Hirschsprung disease (HSCR). In association with mutations of RET gene, and possibly with other loci, defects in NRTN are involved in Hirschsprung disease. This genetic disorder of neural crest development is characterized by the absence of intramural ganglion cells in the hindgut, often resulting in intestinal obstruction. <b>SIMILARITY:</b> Belongs to the TGF-beta family. GDNF subfamily.
<b>Batch No.:</b>	See product label
<b>Unit size:</b>	100 ug
<b>Antigen:</b>	Recombinant human NRTN protein produced using CHO-based suspension cell line. Protein was purified from the cell culture supernatant.
<b>Antibody Type:</b>	Polyclonal
<b>Produced in:</b>	Rabbit
<b>Applications:</b>	Western blot (WB) at a suggested dilution of 1:500-1:1,000. Biosensis recommends optimal dilutions/concentrations should be determined by the end user.
<b>Specificity:</b>	Antibody does not show cross-reactivity to other GDNF-family proteins.
<b>Species Against:</b>	Human
<b>Form:</b>	Concentrated ammonium sulphate in PBS pH 7.4.
<b>Storage:</b>	Store at 2-8C upon receipt. As product is (NH <sub>4</sub> ) <sub>2</sub> SO <sub>4</sub> (ammonium sulfate) precipitate, mix well by pipetting or vortexing prior to use.
<b>Expiry Date:</b>	12 months after purchase



Western-Blot detection of human NRTN expressed in CHO cells. Line 1. hNRTN-containing CHOEBNALT85 cell culture supernatant. Line 2. Negative control - CHOEBNALT85 cell culture supernatant. 5 µl of supernatant were loaded per line. Primary antibody dilution 1:5000 was used. Antibody recognizes protein dimeric, and monomeric variants.

FOR RESEARCH USE ONLY