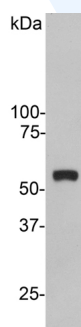




Rabbit polyclonal antibody to Vimentin

Catalogue No.:	R-1699-100
Description:	Vimentin is the major protein subunit of the 10nm or intermediate filaments protein found in many kinds of mesenchymal and epithelia cells. Vimentin is also found in many kinds of cells in tissue culture and in developing neuronal and astrocytic precursor cells in the central nervous system. Vimentin frequently forms copolymers with other intermediate filament proteins, such as GFAP (in many kinds of astrocytes), with desmin (in muscle cells) and neurofilament proteins (in developing neurons). Antibodies to vimentin are useful in studies of stem cells and generally to reveal the filamentous cytoskeleton.
Batch No.:	See product label
Unit size:	100 uL
Antigen:	Recombinant human Vimentin purified from E. coli.
Antibody Type:	Polyclonal
Accession:	P08670 VIME_HUMAN;
Produced in:	Rabbit
Applications:	Western Blotting (WB) and Immunocytochemistry (ICC). A dilution of 1:5,000 - 1:10,000 is recommended for WB. A dilution of 1:1,000-5,000 is recommended for ICC. Biosensis recommends optimal dilutions/concentrations should be determined by the end user.
Specificity:	Specific for the ~55kDa Vimentin protein.
Species Against:	Human, bovine, porcine, rat, and mouse. It is expected that it will work on other mammal tissues.
Form:	Lyophilized rabbit serum with 0.5% sodium azide
Appearance:	White powder
Reconstitution:	Reconstitute in sterile distilled water. Centrifuge to remove any insoluble material.
Storage:	After reconstitution of lyophilised antibody, aliquot and store at -20C for a higher stability. Avoid freeze-thaw cycles.
Expiry Date:	12 months after purchase



Western blot of crude extract of HeLa cells showing a single strong clean band at ~55kDa.

FOR RESEARCH USE ONLY