



## Apolipoprotein E/beta-Amyloid (ApoE/A beta) Complex ELISA Kit (1 Plate)

**Catalogue No.:** BEK-2224-1P

**Description:** Biosensis is proud to offer the first commercially available ApoE/ $\beta$ -amyloid (ApoE/A $\beta$ ) complex ELISA kit. As a result of extensive collaboration with Dr. LaDu's laboratory at UIC and validation by Biosensis, this ELISA can be used to accurately and consistently measure the extent of ApoE/A $\beta$  complex in tissue extracts and other samples. The Biosensis ApoE/A $\beta$  Complex ELISA kit is a sandwich ELISA and consists of a pre-coated mouse monoclonal anti-A $\beta$  capture antibody, a highly validated ApoE/A $\beta$  complex standard that is pre-formed, lyophilized and ready for reconstitution, a biotinylated ApoE detection antibody, and horseradish peroxidase (HRP)-conjugated streptavidin and detection reagent. The addition of a substrate (3,3',5,5'-tetramethylbenzidine, TMB) yields a colored reaction product which is directly proportional to the level of ApoE/A $\beta$  complex present in samples and protein standards. Importantly, a well-characterized and unique ApoE/A $\beta$  complex is included as a standard. This complex is pre-formed and lyophilized, requiring only reconstitution with assay diluent prior to use. In order to assess non-specific ApoE protein binding, each kit includes additional plates pre-coated with control antibody.

The purpose of this kit is the in vitro qualitative measurement of ApoE/A $\beta$  complexes in brain extracts and CSF samples from both transgenic mice and humans or primates, relative to a known ApoE/A $\beta$  complex standard, only if used as directed. This kit has not been tested for other sample applications. This kit has been configured for research use only and is not to be used in diagnostic or clinical procedures.

**Batch No.:** Refer to the product label.

**Specificity:** Human.

**Storage:** Store at 2-8C.

**Expiry Date:** 12 months from purchase.

**Specific References:** Tai LM et al. (2013) J Biol Chem. 288(8): 5914-26  
Tai LM et al. (2014) Mol Neurodegen. 9:2

**General References:** Review:  
Tai LM et al (2015). APOE-modulated A $\beta$ -induced neuroinflammation in Alzheimer's disease: current landscape, novel data, and future perspective. J Neurochem. 133(4):465-88.

**Kit components:** The ELISA kit box contains 2 x 96-well pre-coated strip plates (1 plate MOAB-2 antibody coated, 1 plate control antibody coated), protein standards, detection reagents, wash and sample buffers, substrate buffer and detailed protocols.

**Range:** 0.1 - 6.25%

**Kit protocol:** Please refer to our online product listing for current protocol/MSDS versions.

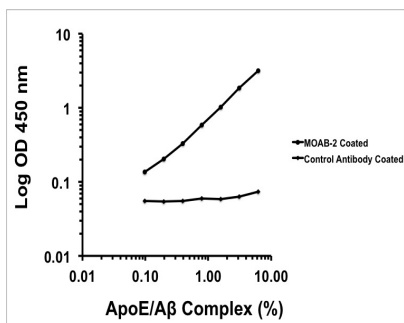
**MSDS:** Please refer to our online product listing for current protocol/MSDS versions.

---

FOR RESEARCH USE ONLY



## Apolipoprotein E/beta-Amyloid (ApoE/A beta) Complex ELISA Kit (1 Plate)



This standard curve generated in our laboratories is for demonstration purposes only, but can be used as a guide to expected performance. A standard curve should be generated for each assay.

Note: while the concentration of ApoE and monomeric A $\beta$  peptide used to generate the standard is accurately determined prior to complex formation, the precise characteristics, size and number of ApoE/A $\beta$  complexes cannot be quantified by any known method. Consequently, results should be presented as a percentage rather than an absolute concentration. This is shown in the graph and also as published by Tai et al. (2013, 2014).

biosensis

FOR RESEARCH USE ONLY