



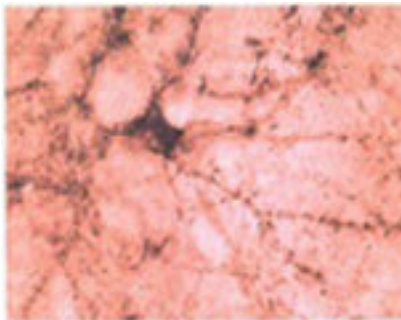
Rabbit antibody to beta synuclein (108-125): whole serum

Catalogue No.:	R-056-100
Description:	Beta-synuclein is a non-amyloid component of senile plaques found in Alzheimer disease. It could act as a regulator of SNCA aggregation. It protects neurons from staurosporine and 6 hydroxy dopamine -stimulated caspase activation in a p53-dependent manner. It localises to the cytoplasm and it is predominantly expressed in the brain where it is most concentrated in presynaptic nerve terminals. This protein is phosphorylated. This protein is also associated with the disease Brain iron accumulation type 1 (NBIA1).
Batch No.:	See product label
Unit size:	100 uL
Antigen:	A synthetic peptide (IEPLMEPEGSYEDPPQE) of human beta synuclein protein (aa: 108-125) conjugated to diphtheria toxoid has been used as the immunogen.
Other Names:	SNCB
Accession:	Q16143 SYUB_HUMAN;
Produced in:	Rabbit
Purity:	Whole serum
Applications:	IHC, WB , immunoblot. A dilution of 1:500 to 1:2000 is recommended for these applications. Biosensis recommends optimal dilutions/concentrations should be determined by the end user.
Specificity:	Less than 0.1% cross reactivity to human alpha synuclein
Cross-reactivity:	This antiserum is known to react with human and rat beta synuclein.
Form:	Lyophilised
Reconstitution:	Reconstitute in 100 uL of sterile water. Centrifuge to remove any insoluble material.
Storage:	After reconstitution keep aliquots at -20C for a higher stability, and at 2-8C with an appropriate antibacterial agent. Glycerol (1:1) may be added for an additional stability. Avoid repetitive freeze/thaw cycles.
Expiry Date:	12 months after purchase
Specific References:	1. Israeli E. and Sharon R. (2009) Beta-synuclein occurs in vivo in lipid-associated oligomers and forms hetero-oligomers with alpha-synuclein J Neurochem. 2009 Jan;108(2):465-74
References:	1. Lundvig, et al Brain Res Mol Brain Res 134, 3-17 (Mar 24, 2005). 2. Bennett, Pharmacol Ther 105, 311-31 (Mar, 2005). 3. Vekrellis, et al., Mol Neurobiol 30, 1-21 (Aug, 2004). 4. Martin, et al., Protein Pept Lett 11, 229-37 (Jun, 2004). 5. Doherty, et al., Acta Neuropathol (Berl) 107, 169-75 (Feb, 2004). 6. Goedert, Curr Opin Genet Dev 11, 343-51 (Jun, 2001). 7. Saito, et al., J Neurol Sci 177, 48-59 (Aug 1, 2000).8. Lucking et al. Cell Mol Life Sci. 2000 Dec;57(13-14):1894-908. 9. Kahle, et al., Ann N Y Acad Sci 920, 33-41 (2000). 10. Clayton, et al., Trends Neurosci 21, 249-54 (Jun, 1998).

FOR RESEARCH USE ONLY



Rabbit antibody to beta synuclein (108-125): whole serum



Immunohistochemical staining of beta synuclein in rat spinal cord using rabbit polyclonal to human beta synuclein, catalogue number R-056-100 . Motor nerve terminals are intensely stained.

biosensis

FOR RESEARCH USE ONLY