



Rabbit antibody to pan synuclein: whole serum

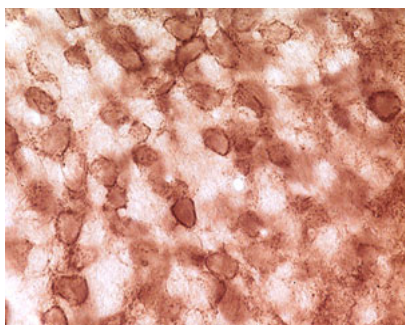
Catalogue No.:	R-060-100
Batch No.:	See product label
Unit size:	100 uL
Antigen:	A synthetic peptide (AKEGVVAAAEEKTKQGV) as a consensus part of human alpha-, beta-, and gamma synuclein proteins conjugated to diphtheria toxoid has been used as the immunogen.
Accession:	SYUA_HUMAN SYUB_HUMAN SYUG_HUMAN
Produced in:	Rabbit
Purity:	Whole serum
Applications:	IHC, WB and immunoblot. A dilution of 1:1000 is recommended for these applications. Biosensis recommends optimal dilutions/concentrations should be determined by the end user.
Specificity:	Overlap specific immunohistochemical staining of alpha-, beta- and gamma synucleins
Cross-reactivity:	This antiserum recognises human and rat alpha-, beta- and gamma synucleins.
Form:	Lyophilised
Reconstitution:	Reconstitute in 100 uL of sterile water. Centrifuge to remove any insoluble material.
Storage:	After reconstitution keep aliquots at -20C for a higher stability, and at 2-8C with an appropriate antibacterial agent. Glycerol (1:1) may be added for an additional stability. Avoid repetitive freeze/thaw cycles.
Expiry Date:	12 months after purchase
Specific References:	<ol style="list-style-type: none">1. Ulusoy A. et al (2010) Eur J Neurosci. 2010 Aug;32(3):409-222. Näsström T. et al (2010) The lipid peroxidation products 4-oxo-2-nonenal and 4-hydroxy-2-nonenal promote the formation of &#945;-synuclein oligomers with distinct biochemical, morphological, and functional properties. Free Radic Biol Med. 2010 Dec 1.3. Eslamboli A. et al (2007) Long-term consequences of human alpha-synuclein overexpression in the primate ventral midbrain. Brain. 2007 Mar;130(Pt 3):799-815.4. Mukaetova-Ladinska E.B. et al (2008) Alpha- and gamma-synuclein proteins are present in cerebrospinal fluid and are increased in aged subjects with neurodegenerative and vascular changes. Dement Geriatr Cogn Disord. 2008;26(1):32-42.
References:	<ol style="list-style-type: none">1. Opazo F. et al J Neurochem. 2008 Jul;106(2):529-402. Lundvig, et al Brain Res Mol Brain Res 134, 3-17 (Mar 24, 2005).3. Bennett, Pharmacol Ther 105, 311-31 (Mar, 2005).4. Vekrellis, et al., Mol Neurobiol 30, 1-21 (Aug, 2004).5. Martin, et al., Protein Pept Lett 11, 229-37 (Jun, 2004).6. Doherty, et al., Acta Neuropathol (Berl) 107, 169-75 (Feb, 2004).7. Goedert, Curr Opin Genet Dev 11, 343-51 (Jun, 2001).8. Saito, et al., J Neurol Sci 177, 48-59 (Aug 1, 2000).9. Lucking et al. Cell Mol Life Sci. 2000 Dec;57(13-14):1894-908.

FOR RESEARCH USE ONLY



Rabbit antibody to pan synuclein: whole serum

10. Kahle, et al., Ann N Y Acad Sci 920, 33-41 (2000).
11. Clayton, et al., Trends Neurosci 21, 249-54 (Jun, 1998).



Immunohistochemical staining of pan synuclein in rat cochlear nucleus using rabbit polyclonal antibody to human pan synuclein, catalogue number R-060-100.

biosensis

FOR RESEARCH USE ONLY