



## Rabbit antibody to BDNF (129-148): whole serum

<b>Catalogue No.:</b>	R-084-100
<b>Description:</b>	<p>THIS PRODUCT HAS BEEN SUPERCEDED. PLEASE REFER TO THE "REPLACED BY" FIELD BELOW TO LOCATE THE CURRENT BIOSENSIS PRODUCT TO MEET YOUR RESEARCH NEEDS. BDNF belongs to the neurotrophin family and regulates the survival and differentiation of neurons during development. The alterations in BDNF expression induced by various kinds of brain insult including stress, ischemia, seizure activity and hypoglycemia, may contribute to some pathologies such as depression, epilepsy, Alzheimer's, and Parkinson's disease.</p> <p>FUNCTION: Promotes the survival of neuronal populations that are all located either in the central nervous system or directly connected to it. Major regulator of synaptic transmission and plasticity at adult synapses in many regions of the CNS. The versatility of BDNF is emphasized by its contribution to a range of adaptive neuronal responses including long-term potentiation (LTP), long-term depression (LTD), certain forms of short-term synaptic plasticity, as well as homeostatic regulation of intrinsic neuronal excitability. SUBUNIT: Monomers and homodimers. Binds to NTRK2/TRKB. SUBCELLULAR LOCATION: Secreted protein. POst translation modification: Converted into mature BDNF by plasmin (PLG). SIMILARITY: Belongs to the NGF-beta family.</p>
<b>Replaced by:</b>	<p>Mouse monoclonal antibody to rhBDNF, Clone 4C8, IgG, cat# M-1744-50/100 Rabbit polyclonal antibody to rhBDNF, affinity-purified, cat# R-1707-100 Rabbit polyclonal antibody to rhBDNF, whole serum, cat# R-088-100 Rabbit polyclonal antibody to rhBDNF, IgG, cat# R-017-500 Rabbit polyclonal antibody to BDNF (129-138), whole serum, cat# R-083-100 Rabbit polyclonal antibody to BDNF (129-138), IgG, cat# R-066-100</p>
<b>Batch No.:</b>	See product label
<b>Unit size:</b>	100 µl
<b>Antigen:</b>	A synthetic peptide (HSDPARRGELSVCDISEWV) as a part of human BDNF protein (aa: 129-148) conjugated to KLH has been used as the immunogen. This sequence is highly conserved amongst mammals.
<b>Other Names:</b>	Brain-derived neurotrophic factor; Abrineurin; proBDNF;
<b>Accession:</b>	P23560 BDNF_HUMAN;
<b>Produced in:</b>	Rabbit
<b>Purity:</b>	Whole serum
<b>Applications:</b>	WB. A dilution of 1:500 to 1:2000 is recommended. For IHC applications, we recommend R-172-20. Biosensis recommends optimal dilutions/concentrations should be determined by the end user.
<b>Specificity:</b>	This antiserum specifically recognises recombinant BDNF and also detects a ~35 kDa band corresponding to the molecular weight of proBDNF in rat brain extract. No cross reactivity with NGF, NT3 or NT4/5 was detected by western blot.
<b>Cross-reactivity:</b>	This antiserum is known to react rat, human and mouse BDNF.

---

FOR RESEARCH USE ONLY

## Rabbit antibody to BDNF (129-148): whole serum

**Form:** Lyophilised

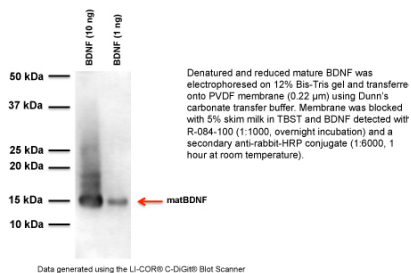
**Reconstitution:** Reconstitute in 100 µl of sterile water. Centrifuge to remove any insoluble material.

**Storage:** After reconstitution keep aliquots at -20°C for a higher stability, and at 4°C with an appropriate antibacterial agent. Glycerol (1:) may be added for an additional stability. Avoid repetitive freeze/thaw cycles.

**Expiry Date:** 12 months after purchase

**Specific References:** 1. Puerta E. et al (2010) Sildenafil protects against 3-nitropropionic acid neurotoxicity through the modulation of calpain, CREB, and BDNF Neurobiol Dis. 2010 May;38(2):237-45.

**References:** BDNF Antibodies for Western Blotting



Denatured and reduced mature BDNF was electrophoresed on 12% Bis-Tris gel and transferred onto PVDF membrane (0.22 µm) using Dunns carbonate transfer buffer. Membrane was blocked with 5% skim milk in TBST and BDNF detected with R-084-100 (1:1000, overnight incubation) and a secondary anti-rabbit-HRP conjugate (1:6000, 1 hour at room temperature).

FOR RESEARCH USE ONLY