



## Rabbit polyclonal antibody to Neuropeptide Y (29-64): Affinity purified

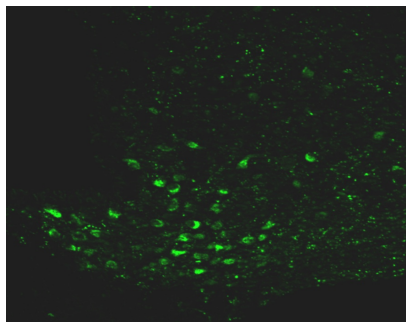
<b>Catalogue No.:</b>	R-1716-50
<b>Description:</b>	Neuropeptide Y is a 36 amino acid neurotransmitter found in the brain and autonomic nervous system. It has been associated with numerous physiologic processes in the brain, including the regulation of energy balance, memory and learning, and epilepsy. The main effect is increased food intake and decreased physical activity. It is also implicated in the secretion of gonadotrophin-release hormone. It is secreted by the hypothalamus and it is one of the most abundant peptides in the nervous system. It is also found in some chromaffin cells of the adrenal medulla. The sheep form of NPY is 94% homologous with human NPY.
<b>Related products:</b>	M-852-100
<b>Unit size:</b>	50 uL
<b>Antigen:</b>	Sheep Neuropeptide Y (29-64: NB. includes only the NPY peptide and not either of the flanking peptides) conjugated to keyhole limpet hemocyanin.
<b>Sequence:</b>	CYPSKPDNPGDDAPAEDLARYYSALRHYINLITRQRY
<b>Antigen Location:</b>	29-64
<b>Other Names:</b>	NPY
<b>Accession:</b>	NPY_HUMAN
<b>Produced in:</b>	Rabbit
<b>Purity:</b>	Affinity purified on antigen column. Refer to vial label for antibody concentration after reconstitution.
<b>Applications:</b>	Sandwich ELISA: recommended concentration: 1:10,000 - 1:50,000 Immunohistochemistry: recommended concentration: 1:2,000 - 1:4,000
<b>Specificity:</b>	Specificity has been confirmed by direct ELISA against the antigen.
<b>Species Against:</b>	Sheep
<b>Cross-reactivity:</b>	Sheep, Human, Mouse & Rat.
<b>Form:</b>	Lyophilised
<b>Reconstitution:</b>	Reconstitute in 50 uL of sterile water. Pulse-centrifuge to remove any insoluble material.
<b>Storage:</b>	Maintain lyophilized material at 2-8C for up to 12 months. After reconstitution keep aliquots at -20C for up to six months or at 2-8C with an appropriate antibacterial agent for up to 4 weeks. Glycerol (1:1) may be added for additional stability. Avoid repetitive freeze/thaw cycles.
<b>Expiry Date:</b>	12 months after purchase in lyophilized format.
<b>Specific References:</b>	Corder KM et al. (2018) Prefrontal cortex-dependent innate behaviors are altered by selective knockdown of Gad1 in neuropeptide Y interneurons. PLoS One. 2018 Jul 19;13(7):e0200809 Application: IHC/IF, frozen sections.

---

FOR RESEARCH USE ONLY



## Rabbit polyclonal antibody to Neuropeptide Y (29-64): Affinity purified



IHC staining of Neuropeptide Y cells and terminals in the arcuate nucleus of mouse brain sections with Rabbit anti-NPY antibody (R-1716-50). Dilution: 1:2000.

biosensis

---

FOR RESEARCH USE ONLY