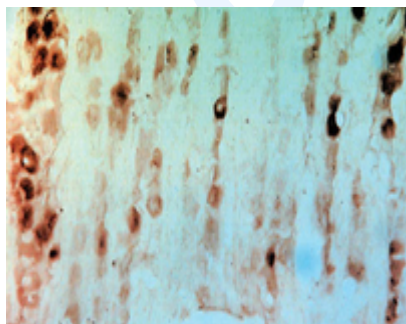


## Rabbit antibody to GFR alpha-3 (1-11): whole serum

<b>Catalogue No.:</b>	R-068-100
<b>Description:</b>	FUNCTION: Receptor for the glial cell line-derived neurotrophic factor, artemin. Mediates the artemin-induced autophosphorylation and activation of the RET receptor tyrosine kinase (By similarity). SUBCELLULAR LOCATION: Cell membrane; lipid-anchor; GPI-anchor (By similarity). SIMILARITY: Belongs to the GDNFR family.
<b>Batch No.:</b>	See product label
<b>Unit size:</b>	100 uL
<b>Antigen:</b>	A synthetic peptide (MGLSWSPRPPL) as part of mouse GFR alpha-3 protein (aa: 1-11) conjugated to KLH
<b>Other Names:</b>	GDNF family receptor alpha-3; GFR-alpha-3
<b>Accession:</b>	GFRA3_MOUSE
<b>Produced in:</b>	Rabbit
<b>Purity:</b>	Whole serum
<b>Applications:</b>	IHC, WB. A dilution of 1:500 to 1:1000 is recommended for both applications. This antibody stains nicely large neurons in the rat DRG. Specifically, if you would like to perform WB using rat brain homogenate detecting GFR alpha-3, this is the antibody to be used. Biosensis recommends optimal dilutions/concentrations should be determined by the end user.
<b>Specificity:</b>	Western blot analysis indicates a high level of specificity to GFR alpha-3 for this antiserum.
<b>Cross-reactivity:</b>	This antibody is known to react with rat GFR alpha-2.
<b>Form:</b>	Lyophilised
<b>Reconstitution:</b>	Reconstitute in 100 uL of sterile water. Centrifuge to remove any insoluble material.
<b>Storage:</b>	After reconstitution keep aliquots at -20C for a higher stability, and at 2-8C with an appropriate antibacterial agent. Glycerol (1:1) may be added for an additional stability. Avoid repetitive freeze/thaw cycles.
<b>References:</b>	Naveilhan et al. (1998) Proc. Natl. Acad. Sci. USA. 95(3): 1295



Immunohistochemical staining of rat dorsal root ganglia using Rabbit antibody to GFR alpha-3 (1-11): whole serum, catalogue no. R-068-100.

---

FOR RESEARCH USE ONLY