



## Rabbit monoclonal antibody to Rho-associated protein kinase 1, ROCK1: Affinity purified

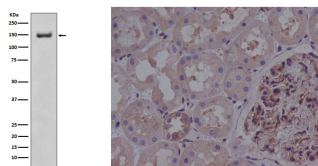
<b>Catalogue No.:</b>	R-1791-100
<b>Description:</b>	Protein kinase which is a key regulator of actin cytoskeleton and cell polarity. Involved in regulation of smooth muscle contraction, actin cytoskeleton organization, stress fiber and focal adhesion formation, neurite retraction, cell adhesion and motility via phosphorylation of DAPK3, GFAP, LIMK1, LIMK2, MYL9/MLC2, PFN1 and PPP1R12A. Phosphorylates FHOD1 and acts synergistically with it to promote SRC-dependent non-apoptotic plasma membrane blebbing. Phosphorylates JIP3 and regulates the recruitment of JNK to JIP3 upon UVB-induced stress. Acts as a suppressor of inflammatory cell migration by regulating PTEN phosphorylation and stability. Acts as a negative regulator of VEGF-induced angiogenic endothelial cell activation. Required for centrosome positioning and centrosome-dependent exit from mitosis. Plays a role in terminal erythroid differentiation. May regulate closure of the eyelids and ventral body wall by inducing the assembly of actomyosin bundles. Promotes keratinocyte terminal differentiation. Involved in osteoblast compaction through the fibronectin fibrillogenesis cell-mediated matrix assembly process, essential for osteoblast mineralization.
<b>Batch No.:</b>	See product label
<b>Unit size:</b>	100 µg
<b>Antigen:</b>	A synthesized peptide derived from human ROCK1
<b>Antibody Type:</b>	Monoclonal
<b>Other Names:</b>	Renal carcinoma antigen NY-REN-35; Rho-associated, coiled-coil-containing protein kinase 1; Rho-associated, coiled-coil-containing protein kinase I; ROCK-I; p160 ROCK-1; p160ROCK
<b>Accession:</b>	Q13464 ROCK1_HUMAN;
<b>Produced in:</b>	Rabbit
<b>Purity:</b>	Affinity purified
<b>Applications:</b>	Western blotting 1:500-1:2000; IHC(P) 1:50-1:200, heat-mediated antigen retrieval required (20 min, citrate buffer pH 6); ICC/IF 1:50-1:200. Biosensis recommends optimal dilutions/concentrations should be determined by the end user.
<b>Species Against:</b>	Human
<b>Cross-reactivity:</b>	Mouse and rat
<b>Form:</b>	Liquid. Rabbit IgG in phosphate buffered saline, pH 7.4, 150 mM NaCl, 0.02% sodium azide and 50% glycerol.
<b>Storage:</b>	Antibody is shipped on blue ice. Upon receipt, aliquot and store at -20°C for a higher stability. Avoid freeze-thaw cycles.
<b>Expiry Date:</b>	12 months after purchase

---

FOR RESEARCH USE ONLY



## Rabbit monoclonal antibody to Rho-associated protein kinase 1, ROCK1: Affinity purified



Left: Detection of ROCK1 expression in Ramos cell lysate by Western Blotting. Right: ROCK1 detection in paraffin-embedded human kidney tissue by IHC. Heat-mediated antigen retrieval was performed in citrate buffer (pH 6) for 20 minutes.

biosensis

---

FOR RESEARCH USE ONLY