



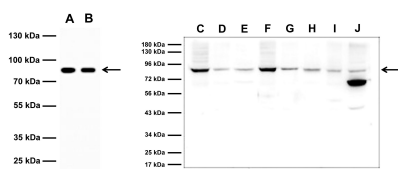
## Rabbit polyclonal antibody to human Mitofusin 2 (601-757): Affinity purified

<b>Catalogue No.:</b>	R-1793-100
<b>Description:</b>	Mitochondrial outer membrane GTPase that mediates mitochondrial clustering and fusion (PubMed:11181170, PubMed:11950885, PubMed:28114303). Mitochondria are highly dynamic organelles, and their morphology is determined by the equilibrium between mitochondrial fusion and fission events (PubMed:28114303). Overexpression induces the formation of mitochondrial networks (PubMed:28114303). Membrane clustering requires GTPase activity and may involve a major rearrangement of the coiled coil domains (Probable). Plays a central role in mitochondrial metabolism and may be associated with obesity and/or apoptosis processes (By similarity). Plays an important role in the regulation of vascular smooth muscle cell proliferation (By similarity). Involved in the clearance of damaged mitochondria via selective autophagy (mitophagy) (PubMed:23620051). Is required for PRKN recruitment to dysfunctional mitochondria (PubMed:23620051). Involved in the control of unfolded protein response (UPR) upon ER stress including activation of apoptosis and autophagy during ER stress (By similarity). Acts as an upstream regulator of EIF2AK3 and suppresses EIF2AK3 activation under basal conditions (By similarity). Reference: uniprot.org
<b>Batch No.:</b>	See product label
<b>Unit size:</b>	100 µg
<b>Antigen:</b>	E.coli-derived recombinant protein corresponding to C-terminal region (601-757aa) from human Mitofusin-2.
<b>Antibody Type:</b>	Polyclonal
<b>Other Names:</b>	Transmembrane GTPase MFN2
<b>Accession:</b>	O95140 MFN2_HUMAN
<b>Produced in:</b>	Rabbit
<b>Molecular Weight:</b>	Human Mitofusin 2 (isoform 1) has a predicted length of 757 amino acids and MW of 86 kDa.
<b>Purity:</b>	Immunogen affinity purified
<b>Applications:</b>	Western Blotting (WB). A concentration of 0.1-0.5 µg/mL is recommended for WB. Biosensis recommends optimal dilutions/concentrations should be determined by the end user.
<b>Specificity:</b>	The specificity of this antibody has been confirmed by WB.
<b>Species Against:</b>	Human
<b>Cross-reactivity:</b>	Rat and mouse
<b>Form:</b>	Lyophilised with 5 mg BSA, 0.9 mg NaCl, 0.2 mg Na <sub>2</sub> HPO <sub>4</sub> , 0.05 mg NaN <sub>3</sub>
<b>Reconstitution:</b>	Reconstitute in 100 µL sterile ultrapure water. Centrifuge to remove any insoluble material.
<b>Storage:</b>	Store lyophilized antibody at 2-8°C. After reconstitution, aliquot and store at -20°C for a higher stability. Avoid freeze-thaw cycles.
<b>Expiry Date:</b>	12 months after purchase

---

FOR RESEARCH USE ONLY

## Rabbit polyclonal antibody to human Mitofusin 2 (601-757): Affinity purified



Detection of Mitofusin-2 protein by Western Blotting. A specific Mitofusin-2 band at 86 kDa is observed in HELA cell lysate (A), A549 cell lysate (B), rat brain (C), rat heart (D), rat kidney (E), mouse brain (F), mouse heart (G), mouse kidney (H), mouse small intestine (I) and mouse NIH3T3 cell lysate (J). Samples were loaded at 50  $\mu$ g total protein per lane. SDS-PAGE: denatured and reduced; Transfer Membrane: nitrocellulose; Blocking: 5% skim milk in TBS, 1.5 hours at RT; Primary antibody: overnight at 4°C (0.5  $\mu$ g/mL); Secondary antibody: anti-rabbit-HRP (1/10,000) 1.5 hours at RT; Detection: Chemiluminescence.

biosensis

FOR RESEARCH USE ONLY