



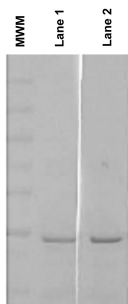
Rabbit polyclonal antibody to bovine beta casein protein: Affinity purified

Catalogue No.:	R-1794-100
Description:	<p>Beta-casein has an important role in determination of the surface properties of the casein micelles. It is cleaved into 3 chains (casoparan, casohypotensin and antioxidant peptide). Casoparan acts as a macrophage activator, increasing the phagocytic activity of macrophages and peroxide release from macrophages. It also acts as a bradykinin-potentiating peptide. Casohypotensin acts as a bradykinin-potentiating peptide and induces hypotension in rats. Acts as a strong competitive inhibitor of endo-oligopeptidase A. Antioxidant peptide has antioxidant activity (ref: uniprot.org).</p> <p>Bovine milk contains two types of beta-casein protein, A2 or A1. Recent studies have shown that milk containing the A1 beta casein protein can contribute to issues including gastrointestinal discomfort after ingestion. There is some evidence of a link between ingestion of A1 beta casein protein and the development of Type 1 diabetes.</p>
Related products:	<p>C-1780-100: Chicken antibody to bovine A2 beta casein: Affinity purified. C-1781-100: Chicken antibody to bovine A1 beta casein: Affinity purified.</p>
Batch No.:	See product label
Unit size:	100 µL
Antigen:	Bovine beta-casein peptides
Antibody Type:	Rabbit polyclonal
Accession:	P02666 (CASB_BOVIN)
Produced in:	Rabbit
Molecular Weight:	~25 kDa
Purity:	Affinity purified
Applications:	ELISA and western blotting (1:5,000 - 1: 20,000). Do not use skim milk for blocking and dilution of assay reagents, BSA is recommended. Biosensis recommends that optimal working dilutions should be determined by the end user.
Specificity:	Bovine beta-casein. Detects both A1 and A2 beta-casein isoforms.
Species Against:	Bovine.
Cross-reactivity:	Species cross-reactivity not tested.
Form:	Liquid in PBS, pH 7.4, without preservative. Refer to the product label for antibody concentration.
Storage:	After opening maintain at -20degC in undiluted aliquots for up to 6 months. For short-term storage, keep aliquot at 2-8degC for up to one week. Avoid repeated freeze-thaw cycles.
Expiry Date:	12 months after date of receipt unopened and stored at -20degC.

FOR RESEARCH USE ONLY



Rabbit polyclonal antibody to bovine beta casein protein: Affinity purified



Western Blot analysis of bovine milk (0.5 μ L/lane; Lane 1 and 2). Primary antibody was used at 1:10,000 dilution. BSA was used in blocking and dilution buffer.

biosensis

FOR RESEARCH USE ONLY