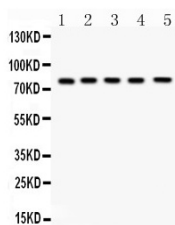


Rabbit antibody to human follicle-stimulating hormone receptor (FSHR) (18-187): Affinity purified

Catalogue No.:	R-1816-100
Description:	Follicle-stimulating hormone receptor (FSHR) is a multi-pass membrane protein that belongs to the G-protein coupled receptor 1 family. FSHR is a receptor for follicle stimulating hormone. At least 2 isoforms arising from alternative splicing have been described. Activates adenylate cyclase and induces cAMP production through the activation of PI3K-AKT and SRC-ERK1/2 signaling pathways.
Batch No.:	See product label
Unit size:	100 µg
Antigen:	E.coli-derived recombinant protein corresponding to amino acids 18-187 from human follicle-stimulating hormone receptor (FSHR).
Antibody Type:	Polyclonal
Other Names:	FSH-R; FSHR; Follitropin receptor; LGR1;
Accession:	P23945 FSHR_HUMAN;
Produced in:	Rabbit
Molecular Weight:	FSHR has a MW of 78 kDa as determined by SDS-PAGE/Western Blotting.
Purity:	Immunogen affinity purified.
Applications:	Western Blotting (WB). A concentration of 0.2-1.0 µg/mL is recommended. Biosensis recommends optimal dilutions/concentrations should be determined by the end user.
Species Against:	Human. Cross-reacts with mouse and rat FSHR as demonstrated by Western Blotting.
Form:	Lyophilized. Each vial contains 5 mg BSA, 0.9mg NaCl, 0.2mg Na ₂ HPO ₄ , 0.05mg Na ₃ N.
Reconstitution:	Reconstitute in 100 µL of sterile ultrapure water to achieve an antibody concentration of 1 mg/mL. Centrifuge to remove any insoluble material.
Storage:	Store lyophilized antibody at 2-8°C. After reconstitution, aliquot and store at -20°C for a higher stability. Avoid freeze-thaw cycles.
Expiry Date:	12 months after purchase if unopened



Western blot analysis of FSH Receptor expression in rat testis extract (lane 1), rat ovary extract (lane 2), mouse testis extract (lane 3) mouse ovary extract (lane 4) and HELA whole cell lysates (lane 5). Rabbit antibody to FSH Receptor (0.5 µg/mL) detects a clear, strong band at 78 kDa corresponding to the MW of FSHR.

FOR RESEARCH USE ONLY