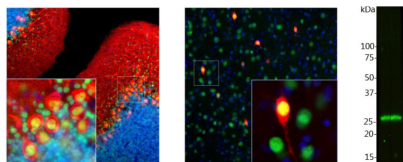




Mouse antibody to human calbindin [4H7]: affinity purified

Catalogue No.:	M-1797-100
Description:	Buffers cytosolic calcium. May stimulate a membrane Ca ²⁺ -ATPase and a 3'5'-cyclic nucleotide phosphodiesterase. Ref: uniprot.org
Batch No.:	See product label.
Unit size:	100 ug
Antigen:	Full-length recombinant human protein
Isotype:	IgG1
Clone:	4H7
Other Names:	Calbindin D28; D-28K; Vitamin D-dependent calcium-binding protein, avian-type
Accession:	P05937 (CALB1_HUMAN)
Produced in:	Mouse
Purity:	Affinity purified
Applications:	Western blotting (1:1,000-1:5,000) and Immunohistochemistry (1:1,000). Biosensis recommends optimal dilutions/concentrations should be determined by the end user.
Specificity:	Reacts with human, horse, cow, pig, chicken, rat, mouse.
Form:	Lyophilised from a solution containing PBS buffer pH 7.2-7.6 with 5 mM sodium azide as preservative.
Reconstitution:	Spin vial briefly before opening. Reconstitute in 100 uL sterile water. Centrifuge to remove any insoluble material. Final buffer contains preservative.
Storage:	Store lyophilised antibody at 2-8C. After reconstitution divide into aliquots and store at -20C for long-term storage. Store at 2-8C short-term (up to 4 weeks). Avoid repetitive freeze/thaw cycles.
Expiry Date:	12 months after purchase if unopened.



Left and middle: Detection of calbindin immunoreactivity in rat brain cerebellum (Left) and cortex (Middle) sections by Immunohistochemistry. Calbindin (red) is predominantly expressed in the dendrites and perikarya of Purkinje cells in the molecular layer of cerebellum (left), and selectively expressed in certain type of interneurons (calbindin-positive interneuron) in the cortex (middle). Methyl-CpG binding protein 2 (Rabbit anti-MeCP2, R-1810-100, green) is universally expressed in the nuclei of almost all neurons. As a result, double-immunofluorescence shows that calbindin-expressing cell somas appear red, but the nucleus appears to be yellow. Blue: DAPI nuclear stain. Insets represent high magnification images of the boxed areas. IHC method: 45 um sections, fixed by transcardial perfusion with 4% paraformaldehyde. Right: Western blot analysis of calbindin expression in cow cerebellum homogenate. The antibody shows strong immunoreactivity with one calbindin band at ~30 kDa.

FOR RESEARCH USE ONLY