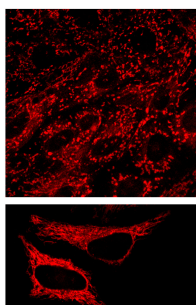




Biosensis Mito-R Mitochondria Tracing Reagent

Catalogue No.:	TR-602-MR
Description:	TR-602-MR is a cell-permeant stain for mitochondria. This tracing reagent can be used on live cells, frozen and fixed tissue samples and is compatible with other dyes. TR-602-MR has a large Stokes Shift, shows excellent resistance to photobleaching and demonstrates low cytotoxicity. TR-602-MR is manufactured by ReZolve Scientific.
Batch No.:	Please refer to the product label.
Unit size:	0.5 mg
Applications:	Fluorescent imaging of mitochondria. Sample types: live cells, tissue (frozen and 4% paraformaldehyde). Quenching endogenous fluorescence can assist in imaging, refer to the product manual. Not suitable for application on fixed cells. Epifluorescence microscopy: YES Confocal microscopy: YES Multiphoton imaging: YES Infrared spectroscopy: NO Raman spectroscopy: NO Ex/Em: 405 nm / 600 nm Typical working dilution is 1:200 - 1:1,000 (10-50 μ M) in appropriate buffer or cell culture medium. Biosensis recommends optimal dilutions/concentrations should be determined by the end user.
Specificity:	Cell penetration and localisation of TR-602-MR has been confirmed in prostate cells (PNT2 and 22RV1), cardiomyocytes (H9c2) and cancer cell lines (HeLa). Mitochondrial localisation has been shown in live tissues, including live adipose tissue (sheep) and muscle tissue (sheep cardiac and skeletal) and frozen or PFA fixed muscle tissue (sheep skeletal).
Reconstitution:	Spin vial briefly before opening. Reconstitute TR-602-MR with 55 μ L of DMSO to obtain a 10 mM stock solution, mix thoroughly before use. Avoid PBS or cell culture medium for reconstitution.
Storage:	Store lyophilised product at 2-8C, properly sealed and protected from light. Stock solution should be stored at 2-8C, properly sealed and protected from light. Working solutions should be used immediately and not stored for later use.
Expiry Date:	Lyophilised product is stable for 6 months at 2-8C after purchase, if protected from light. After reconstitution in DMSO, liquid 10 mM stock solution is stable for 2 months at 2-8C.
General References:	Sorvina A et al. (2018) Mitochondrial imaging in live or fixed tissues using a luminescent iridium complex. Sci Rep. 2018 May 29;8(1):8191.
Reagent Kit protocol:	Please refer to our online product listing for current protocol/MSDS versions.
MSDS:	Please refer to our online product listing for current protocol/MSDS versions.



Staining of mitochondria in cardiomyocytes (top) and HeLa cells (bottom) with TR-602-MR tracing reagent.

FOR RESEARCH USE ONLY