



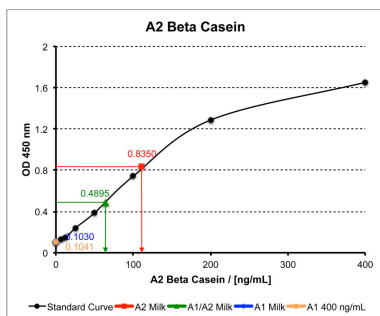
## Bovine A2 Beta Casein ELISA Kit (1 plate)

<b>Catalogue No.:</b>	BEK-2365-1P
<b>Description:</b>	<p>Bovine milk may contain two types of beta-casein protein, A2 or A1, which differ by a single-point mutation at amino acid position 82 (P82/H82). Recent studies have shown that milk containing the A1 beta casein protein can contribute to issues including gastrointestinal discomfort after ingestion. There is some evidence of a link between ingestion of A1 beta casein protein and the development of Type 1 diabetes.</p> <p>The Biosensis Bovine A2 Beta Casein ELISA Kit is a sandwich ELISA that allows the specific quantification of the A2 isoform of bovine beta casein in bovine milk, only if used as directed. The A1 isoform is not detected in this ELISA assay. Please refer to the kit protocol for specific use instructions.</p> <p>Pre-coated plate, native protein standard, detection antibody, TMB substrate and buffers are provided to run one 96-well microplate.</p>
<b>Related products:</b>	BEK-2364-1P, Bovine A1 Beta Casein ELISA Kit (1 plate)
<b>Batch No.:</b>	Refer to the product label.
<b>Antigen:</b>	Bovine A2 beta casein (P82)
<b>Accession:</b>	P02666 (CASB_BOVIN)
<b>Specificity:</b>	Bovine A2 beta casein. Other species not tested yet
<b>Cross-reactivity:</b>	No cross-reactivity is observed with bovine A1 beta casein
<b>Storage:</b>	Storage conditions are specific to individual kit components. Refer to the kit protocol for details.
<b>Expiry Date:</b>	6 months from purchase.
<b>Kit components:</b>	<p>ELISA plate pre-coated with rabbit anti-pan casein antibody, 1 x 96-well microplate, store at 2-8C</p> <p>BSA for antibody dilution buffer, lyophilized, store at 2-8C</p> <p>10X TBS, store at 2-8C</p> <p>Tween-20, 50%, 1 mL, store at 2-8C</p> <p>Native A2 beta casein protein standard, 40 ug/mL, store at -20C</p> <p>Chicken anti-A2 beta casein detection antibody, 0.3 mg/mL, store at -20C</p> <p>Rabbit anti-chicken HRP conjugate, store at -20C</p> <p>TMB substrate, store at 2-8C</p> <p>Reagents not included in this kit:</p> <p>HCl stop solution, 1 mol/L</p>
<b>Range:</b>	6.25 ng/mL - 400 ng/mL
<b>Kit protocol:</b>	Please refer to our online product listing for current protocol/MSDS versions.

---

FOR RESEARCH USE ONLY

## Bovine A2 Beta Casein ELISA Kit (1 plate)



This standard curve generated in our laboratories is for demonstration purposes only, but can be used as a guide to expected performance. A standard curve should be generated for each assay.

biosensis

FOR RESEARCH USE ONLY