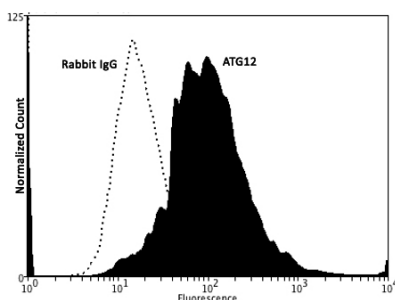




Rabbit antibody to ATG12: IgG

Catalogue No.:	R-137-500
Description:	FUNCTION: Required for autophagy. SUBUNIT: Conjugated to ATG5. SUBCELLULAR LOCATION: Cytoplasm. ALTERNATIVE PRODUCTS: 2 named isoforms produced by alternative splicing. TISSUE SPECIFICITY: Ubiquitous. SIMILARITY: Belongs to the ATG12 family.
Batch No.:	See product label
Unit size:	500 ug
Antigen:	A synthetic peptide corresponding to the N-terminal of human ATG12 protein has been used as the immunogen. No immunogenic carrier protein was conjugated to the immunogen. Instead, Adjuvane B (see the Adjuvants in biosensis' product list) has been used to orchestrate/boost the immune response.
Other Names:	Autophagy-related protein 12; APG12-like; ATG12; APG12; APG12L
Accession:	ATG12_HUMAN
Produced in:	Rabbit
Purity:	Protein G purified IgG
Applications:	IHC, immunofluorescence, WB (1-5 ug/mL working concentration), Flow Cytometry (2ug/10 ⁶ cells). Biosensis recommends optimal dilutions/concentrations should be determined by the end user.
Specificity:	IHC and WB confirmed the specificity for ATG12.
Cross-reactivity:	Human, rat
Form:	Lyophilised
Reconstitution:	Reconstitute in 500 uL of sterile water. Centrifuge to remove any insoluble material.
Storage:	After reconstitution keep aliquots at -20C for a higher stability, and at 2-8C with an appropriate antibacterial agent. Glycerol (1:1) may be added for an additional stability. Avoid repetitive freeze/thaw cycles.
Expiry Date:	12 months after purchase
References:	<ol style="list-style-type: none"> 1. Mizushima, N. et al. J. Biol. Chem. 273(51):33889-33892 (1998). 2. Tanida, I. et al. Biochem. Biophys. Res. Commun. 296(5):1164-1170 (2002). 3. Tanida, I. et al. J. Biol. Chem. 277(16):13739-13744 (2002).



Fixing and Permeabilization of cells: Absolute methanol (10 minutes in ice) and 0.1% Tween-20 in PBS, Blocking: 15% Horse serum, Primary antibody: Rabbit Polyclonal antibody to ATG12 (cat # R-137-500, 2µg per ~10⁶ cells) for 30 minutes at room temperature, Secondary antibody: Donkey anti-rabbit PE labeled secondary antibody (1:100 fold dilution) with incubation for 20 minutes in dark at room temperature. Normal Rabbit Polyclonal IgG was used as negative control under same conditions (black dashed). Flow cytometry data and results were generated using Orflo MoxiflowTM instrument and protocols. The data demonstrates specific staining of ATG12 expressed in human neuroblastoma SH-SY5Y cell line

FOR RESEARCH USE ONLY



Rabbit antibody to ATG12: IgG

```
using cat # R-137-500.
/* Font Definitions */
@font-face
{font-family:"&#65325;&#65331; &#26126;&#26397;";
mso-font-charset:78;
mso-generic-font-family:auto;
mso-font-pitch:variable;
mso-font-signature:1 134676480 16 0 131072 0;}
@font-face
{font-family:Verdana;
panose-1:2 11 6 4 3 5 4 4 2 4;
mso-font-charset:0;
mso-generic-font-family:auto;
mso-font-pitch:variable;
mso-font-signature:647 0 0 0 415 0;}
@font-face
{font-family:"Cambria Math";
panose-1:2 4 5 3 5 4 6 3 2 4;
mso-font-charset:0;
mso-generic-font-family:auto;
mso-font-pitch:variable;
mso-font-signature:-536870145 1107305727 0 0 415 0;}
/* Style Definitions */
p.MsoNormal, li.MsoNormal, div.MsoNormal
{mso-style-unhide:no;
mso-style-qformat:yes;
mso-style-parent:"";
margin:0cm;
margin-bottom:.0001pt;
mso-pagination:widow-orphan;
font-size:12.0pt;
font-family:"Times New Roman";
mso-fareast-font-family:"&#65325;&#65331; &#26126;&#26397;";
mso-fareast-theme-font:minor-fareast;}
.MsoChpDefault
{mso-style-type:export-only;
mso-default-props:yes;
font-size:10.0pt;
mso-ansi-font-size:10.0pt;
mso-bidi-font-size:10.0pt;
mso-fareast-font-family:"&#65325;&#65331; &#26126;&#26397;";
mso-fareast-theme-font:minor-fareast;
mso-fareast-language:JA;}
@page WordSection1
{size:612.0pt 792.0pt;
margin:72.0pt 90.0pt 72.0pt 90.0pt;
mso-header-margin:36.0pt;
mso-footer-margin:36.0pt;
mso-paper-source:0;}
div.WordSection1
{page:WordSection1;}
-->
```

FOR RESEARCH USE ONLY



Rabbit antibody to ATG12: IgG

biosensis

FOR RESEARCH USE ONLY