

Rabbit antibody to MAP1LC3 C : whole serum

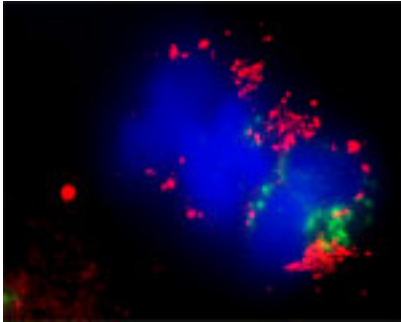
Catalogue No.:	R-140-100
Description:	<p>FUNCTION: Probably involved in formation of autophagosomal vacuoles (autophagosomes). SUBUNIT: 3 different light chains, LC1, LC2 and LC3, can associate with MAP1A and MAP1B proteins. SUBCELLULAR LOCATION: LC3-I: Cytoplasm. LC3-II: Intracytoplasmic membrane; lipid-anchor. LC3-II binds to the autophagic membranes. TISSUE SPECIFICITY: Most abundant in placenta, lung and ovary. PTM: The precursor molecule is cleaved by APG4B/ATG4B to form the cytosolic form, LC3-I. This is activated by APG7L/ATG7, transferred to ATG3 and conjugated to phospholipid to form the membrane-bound form, LC3-II. SIMILARITY: Belongs to the MAP1 LC3 family.</p>
Batch No.:	See product label
Unit size:	100 uL
Antigen:	A synthetic peptide (CQEEVAGIRAKF) corresponding to the N-terminal of human MAP1LC3 C conjugated to Blue Carrier Protein has been used as the immunogen. The peptide is homologous with the corresponding sequence derived from MAP1LC3 C protein in Macaca mulatta (monkey) and Canis familiaris (dog).
Other Names:	Microtubule-associated proteins 1A/1B light chain 3C; Microtubule-associated protein 1 light chain 3 gamma; MAP1A/MAP1B LC3 C; MAP1A/1B light chain 3 C; MAP1 light chain 3-like protein 3; Autophagy-related protein LC3 C; Autophagy-related ubiquitin-like modifier LC3 C; APG8c; MAP1LC3C
Accession:	MLP3C_HUMAN
Produced in:	Rabbit
Purity:	Whole serum
Applications:	IHC, immunofluorescence, WB. A dilution of 1:100 to 1:1000 dilution is recommended for these applications. Biosensis recommends optimal dilutions/concentrations should be determined by the end user.
Specificity:	IHC and WB confirmed the specificity for MAP1LC3 C . This antibody should recognise MAP1LC3 C only and not the other forms MAP1LC3A and MAP1LC3B.
Cross-reactivity:	Human, other species have not yet been tested.
Form:	Lyophilised
Reconstitution:	Reconstitute in 100 uL of sterile water. Centrifuge to remove any insoluble material.
Storage:	After reconstitution keep aliquots at -20C for a higher stability, and at 2-8C with an appropriate antibacterial agent. Glycerol (1:1) may be added for an additional stability. Avoid repetitive freeze/thaw cycles.
Expiry Date:	12 months after purchase
References:	<ol style="list-style-type: none">1. Greenberg JT. Dev Cell. 8(6):799-801. (2005)2. Baehrecke EH. Nat Rev Mol Cell Biol. 6(6):505-10. (2005)3. Levine B. Cell. 120(2):159-62. (2005)4. Tanida I., et al. J. Biol. Chem. 279:36268-36276(2004)

FOR RESEARCH USE ONLY

Rabbit antibody to MAP1LC3 C : whole serum

5. Lum JJ, et al. Nat Rev Mol Cell Biol. 6(6):439-48. (2005)

6. Tanida I., et al. Int. J. Biochem. Cell Biol. 36:2503-2518(2004)



Confocal microscopy on immunofluorescently detected MAP1LC3 C in cytospin-isolated human white blood cells using Rabbit antibody to MAP1LC3 C : whole serum (R-140-100) at a dilution of 1: 200, incubated for 1 h at room temperature. The detected MAP1LC3 C appears red. The cells were also stained for Myeloperoxidase (MPO) appearing in green. The cells were counter stained with Hoechst Dye (blue colour). Here, the merged picture is presented.

biosensis

FOR RESEARCH USE ONLY