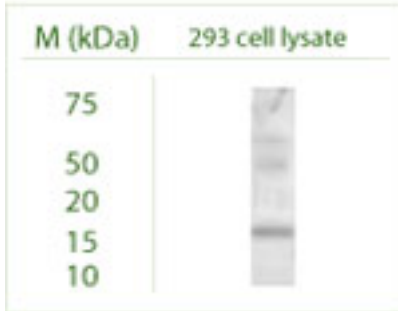


Rabbit antibody to GABARAP L2 (GABARAPL2): whole serum

Catalogue No.:	R-142-100
Description:	FUNCTION: Involved in intra-Golgi traffic. Modulates intra-Golgi transport through coupling between NSF activity and SNAREs activation. It first stimulates the ATPase activity of NSF which in turn stimulates the association with GOSR1. SUBUNIT: Monomer. Interacts with GABRG2, NSF, GOSR1 and beta-tubulin. Interacts with ULK1. SUBCELLULAR LOCATION: Golgi apparatus. TISSUE SPECIFICITY: Ubiquitous. Expressed at high levels in the brain, heart, prostate, ovary, spleen and skeletal muscle. Expressed at very low levels in lung, thymus and small intestine. SIMILARITY: Belongs to the MAP1 LC3 family. ESTIMATED MOLECULAR WEIGHT: 13.667kDa.
Batch No.:	See product label
Unit size:	100 uL
Antigen:	A synthetic peptide (CVESAKIRAKYP) corresponding to the N-terminal of human GABARAP L2 (GABARAPL2) protein has been used as the immunogen. The sequence is homologous with mouse and rat form of GABARAP L2 (GABARAPL2).
Other Names:	Gamma-aminobutyric acid receptor-associated protein-like 2; GABA(A) receptor-associated protein-like 2; Ganglioside expression factor 2; GEF-2; General protein transport factor p16; MAP1 light chain 3-related protein; GABARAPL2; FLC3A; GEF2;
Accession:	GBRL2_HUMAN GBRL2_MOUSE GBRL2_RAT
Produced in:	Rabbit
Purity:	Whole serum
Applications:	IHC, immunofluorescence, WB. A dilution of 1:200 to 1:1000 dilution is recommended for these applications. Biosensis recommends optimal dilutions/concentrations should be determined by the end user.
Specificity:	IHC, WB and ELISA confirmed the specificity for GABARAP L2 (GABARAPL2). A 14kDa band, that corresponds to the molecular weight of GABARAPL2, is detected via western blot analysis.
Cross-reactivity:	Human, rat. Other species not yet tested.
Form:	Lyophilised
Reconstitution:	Reconstitute in 100 uL of sterile water. Centrifuge to remove any insoluble material.
Storage:	After reconstitution keep aliquots at -20C for a higher stability, and at 2-8C with an appropriate antibacterial agent. Glycerol (1:1) may be added for an additional stability. Avoid repetitive freeze/thaw cycles.
Expiry Date:	Six months after purchase
References:	1. Okazaki N. et al. Brain Res. Mol. Brain Res. 85:1-12(2000) 2. Xin Y. et al. Genomics 74:408-413(2001) 3. The MGC Project Team. Genome Res. 14:2121-2127(2004)

FOR RESEARCH USE ONLY

Rabbit antibody to GABARAP L2 (GABARAPL2): whole serum



Western blot under reducing conditions on 293 cell lysate using Rabbit antibody to GABARAP L2 (GABARAPL2): whole serum (R-142-100) at a dilution of 1:100.

biosensis

FOR RESEARCH USE ONLY