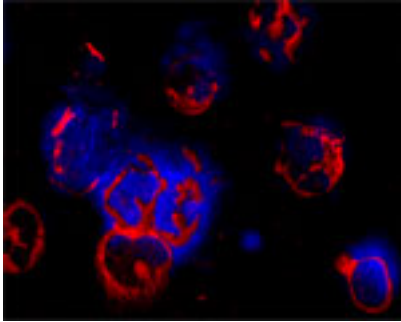


Rabbit antibody to ATG10: whole serum

Catalogue No.:	R-145-100
Description:	ATG10 plays a role in autophagy. It is an E2-like enzyme involved in 2 ubiquitin-like modifications essential for autophagosome formation: ATG12-ATG5 conjugations and modification of a soluble form of MAPLC3 1A, a homolog of yeast ATG8, to a membrane bound form. It is also able to directly interact either with ATG5 or ATG7.
Batch No.:	See product label
Unit size:	100 uL
Antigen:	A peptide (CLKNSQKINKNV) corresponding to the C-terminal of human ATG10 protein has been used as the immunogen.
Other Names:	Autophagy-related protein 10; APG10-like; ATG10
Accession:	ATG10_HUMAN
Produced in:	Rabbit
Purity:	Whole serum
Applications:	IHC, immunofluorescence. A dilution of 1:100 to 1:1000 dilution is recommended for these applications. Biosensis recommends optimal dilutions/concentrations should be determined by the end user.
Specificity:	IHC, WB and ELISA confirmed the specificity for ATG10.
Cross-reactivity:	Human. Other species not yet tested.
Form:	Lyophilised
Reconstitution:	Reconstitute in 100 uL of sterile water. Centrifuge to remove any insoluble material.
Storage:	After reconstitution keep aliquots at minus 20C for a higher stability, and at 2-8C with an appropriate antibacterial agent. Glycerol (1:1) may be added for an additional stability. Avoid repetitive freeze/thaw cycles.
Expiry Date:	Six months after purchase
Specific References:	1. Ryningen A et al (2012) Inhibition of Mammalian target of rapamycin in human acute myeloid leukemia cells has diverse effects that depend on the environmental in vitro stress. Bone Marrow Res. 2012;2012:329061.
References:	1. Wan D. et al. Proc. Natl. Acad. Sci. U.S.A. 101:15724-15729 (2004) 2. Ota T. et al. Nat. Genet. 36:40-45(2004) 3. The MGC Project Team. Genome Res. 14:2121-2127(2004).

FOR RESEARCH USE ONLY

Rabbit antibody to ATG10: whole serum



Confocal microscopy on immunofluorescently detected ATG10 in cytospin-isolated human white blood cells using Rabbit antibody to ATG10: whole serum (R-145-100) at a dilution of 1: 100, incubated for 1 h at room temperature. The cells stained for ATG10 appear in red. The cells were then counter stained with Hoechst Dye (blue colour). Here, the merged picture is presented. More information on the staining: Fixation: In acetone for 90 seconds. Antibody dilutions: Primary antibody was diluted 1:100 and incubated for 1 hour, washed then 3x, and the secondary (Goat anti Rb 1:100 alexa 546 conjugate) was incubated for 30 minutes. Magnification 80X.

biosensis

FOR RESEARCH USE ONLY