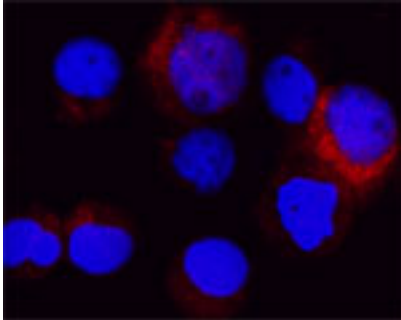


Rabbit antibody to ATG16 L1: whole serum

Catalogue No.:	R-158-100
Description:	ATG16 L1 plays an essential role in autophagy. It is a homooligomer and interacts with ATG5. Part of either the minor and major complexes respectively composed of 4 sets of ATG12-ATG5 and ATG16L1 (400 kDa) or 8 sets of ATG12-ATG5 and ATG16L1 (800 kDa). ATG16 L1 localises to the cytoplasm, in particular to preautophagosomal structure (PAS) where it is involved in the membrane targeting of ATG5. There are 5 named isoforms produced by alternative splicing. Genetic variation within ATG16 L1 are associated with susceptibility to inflammatory bowel disease type 1.
Batch No.:	See product label
Unit size:	100 uL
Antigen:	Central peptide of human ATG16-L1 protein (NRLNAENEKDS) conjugated to Blue Carrier Protein has been used as the immunogen.
Antibody Type:	Polyclonal
Other Names:	Autophagy-related protein 16-1; APG16-like 1; ATG16L1
Accession:	A16L1_HUMAN
Produced in:	Rabbit
Purity:	Whole serum
Applications:	Non-reduced western blot: 1:100; IP: 1-50-1:100 (5-10uL/500uL lysate); ELISA: 1:2000-1:3000 direct detection only, recombinant immunogen.
Specificity:	Detects human protein via non-reduced WB, and ELISA
Cross-reactivity:	Human, rat. Other species not yet tested.
Form:	Lyophilised
Reconstitution:	Reconstitute in 100 uL of sterile water. Centrifuge to remove any insoluble material.
Storage:	After reconstitution keep aliquots at -20C for a higher stability, and at 2-8C with an appropriate antibacterial agent. Avoid repetitive freeze/thaw cycles.
Expiry Date:	Six months after purchase
Specific References:	<ol style="list-style-type: none">1. Cooney R et al (2009). NOD2 stimulation induces autophagy in dendritic cells influencing bacterial handling and antigen presentation. Nat. Med. Dec 6 20092. Scharl M. et al (2011). Protein tyrosine phosphatase nonreceptor type 2 regulates autophagosome formation in human intestinal cells. Inflamm Bowel Dis. 2011 Oct 10.
References:	<ol style="list-style-type: none">1. Zheng H, et al. DNA Seq. 15:303-305 (2004).2. Clark H.F, et al. Genome Res. 13:2265-2270 (2003).

FOR RESEARCH USE ONLY

Rabbit antibody to ATG16 L1: whole serum



Atg16 L1 detected in cytopun HL60 cells by fluorescence confocal microscopy using antibody R-158-100. HL60 cells were fixed with acetone 90 seconds; primary antibody was diluted 1:100 and incubated for 1 hour, 3 x washes and secondary (Goat anti Rb 1:100 alexa 546 conjugate) for 30 minutes. Cells stained for Atg16 L1 appear in red. The cells were then counter-stained with Hoechst Dyeblue colour.

biosensis

FOR RESEARCH USE ONLY