



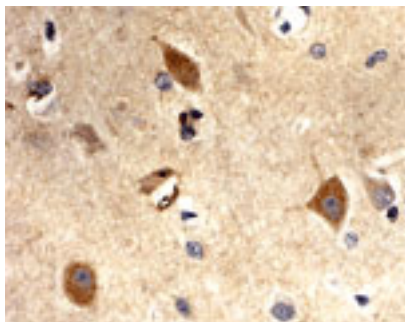
Rabbit antibody to superoxide dismutase (SOD1; 121-139): whole serum

Catalogue No.:	R-168-100
Description:	SOD1 binds copper and zinc ions and is one of two isozymes responsible for destroying free superoxide radicals which are normally produced within the cells and which are toxic to biological systems. SOD1 is a soluble cytoplasmic protein, acting as a homodimer to convert superoxide radicals to molecular oxygen and hydrogen peroxide. Defects in SOD1 are the cause of amyotrophic lateral sclerosis type 1 (ALS1) which is a neurodegenerative disorder affecting upper and lower motor neurons and resulting in fatal paralysis.
Batch No.:	See product label
Unit size:	100 uL
Antigen:	A peptide (HEKADDLGKGGNEESTKTG) corresponding to the amino acids 121-139 of human superoxide dismutase (SOD1) conjugated to diphtheria toxin has been used as the immunogen.
Other Names:	Superoxide dismutase; SOD1;
Accession:	SODC_HUMAN
Produced in:	Rabbit
Purity:	Whole serum
Applications:	IHC, WB. This antibody works superbly in immunohistochemistry on frozen or paraffin embedded tissues. Antigen retrieval has been used in testing but may not be necessary. Typical working dilutions for routine immunohistochemistry are 1: 100 to 1: 1000 depending on tissue and detection method. For western blotting a dilution range of 1: 1000 to 1: 4000 is recommended. Biosensis recommends optimal dilutions/concentrations should be determined by the end user.
Specificity:	This antibody has been shown to be specific for superoxide dismutase (SOD1) protein.
Cross-reactivity:	Human. Does not detect mouse and rat SOD1.
Form:	Lyophilised
Reconstitution:	Reconstitute in 100 uL of sterile water. Centrifuge to remove any insoluble material.
Storage:	After reconstitution keep aliquots at -20C for a higher stability, and at 2-8C with an appropriate antibacterial agent. Avoid repetitive freeze/thaw cycles. Glycerol (1:1) may be added for an additional stability.
Expiry Date:	12 months after purchase
References:	1. Jabusch J.R, et al. Biochemistry 19:2310-2316(1980). 2. Levanon D, et al. EMBO J. 4:77-84(1985).

FOR RESEARCH USE ONLY



Rabbit antibody to superoxide dismutase (SOD1; 121-139): whole serum



Immunohistochemical detection (DAB staining) of superoxide dismutase (SOD1) in paraffin embedded human brain tissue using Rabbit antibody to superoxide dismutase (SOD1; 121-139): whole serum (R-168-100) at a dilution of 1: 100 incubated overnight. Secondary antibody was biotinylated goat anti-rabbit used at a dilution of 1: 3000 together with Vector ABC. This antibody labels neurons and some glial cells in human brain tissue. Other tissues have not yet been tested.

biosensis

FOR RESEARCH USE ONLY