



Rabbit antibody to human Synapsin (Phospho-Ser9)

Catalogue No.: R-503-100

Batch No.: See product label

Unit size: 100µg

Antigen: A synthetic phosphopeptide from the N-terminus of human synapsin

Other Names: Synapsin-1; Synapsin I; Brain protein 4.1

Produced in: Rabbit

Purity: Affinity purified

Applications: WB. A dilution of 1:500- 1:1000 is recommended. The optimal dilution should be determined by the end user.

Specificity: Synapsin (phospho-Ser9) antibody detects endogenous levels of synapsin only when phosphorylated at serine 9.

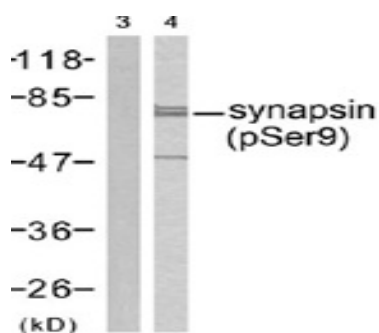
Cross-reactivity: This antibody is known to cross-react with mouse and rat synapsin. Other species have not yet been tested.

Form: Lyophilised

Reconstitution: Reconstitute with addition of 100µl of sterile water.

Storage: It is recommended that a thawed sample is stored at 4C for no longer than 2 weeks. Allocation of appropriate anti-bacterial agent can increase shelf life by several weeks. Diluted serum should be prepared as required. Long term stability requires storage, preferably in small aliquots at -20C or lower.

Expiry Date: 12 months upon reconstitution



Western blot analysis of mouse brain extract using rabbit antibody to synapsin (R-503-100). Lane 3 shows reactivity when the antibody has been pre-absorbed with immunising peptide. Lane 4 shows antibody reactivity without pre-absorption.

FOR RESEARCH USE ONLY