

## Guinea pig polyclonal antibody to mouse agouti related protein, AGRP (82-131): Whole serum

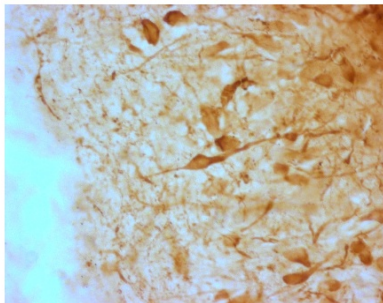
<b>Catalogue No.:</b>	GP-029-50
<b>Description:</b>	AGRP is the endogenous antagonist of alpha-melanocyte stimulating hormone and has been shown to cause potent stimulation of food intake, and this protein is found in over 90% of Neuropeptide Y containing cells in rats.
<b>Batch No.:</b>	See product label
<b>Unit size:</b>	50 uL
<b>Antigen:</b>	A synthetic peptide (SPRRCVRLHESCLGQQVPCCDPCATCYCRFFNAFCYCRKLGATNLCST) corresponding to a region (82-131) within the carboxy domain of mouse agouti related protein. This peptide was conjugated to carrier protein to enhance the immunological response.
<b>Other Names:</b>	Agrp; Agrt; Art; Agouti-related protein;
<b>Accession:</b>	AGRP_MOUSE
<b>Produced in:</b>	Guinea pig
<b>Purity:</b>	Neat serum
<b>Applications:</b>	IHC, frozen, PFA fixed material. Not yet tested on paraffin embedded tissue sections. A concentration of 1:1000 to 1:2000 is recommended for IHC with overnight incubations. Permeabilization suggested is 0.1% triton X-100 in blocking buffer. IHC performed in sheep brain (hypothalamus) demonstrates intense staining of cells and terminals. No staining is evident when the primary antibody is pre-absorbed with 0.5 mg/mL of AGRP. In rodents such as rat cell terminal staining is most typically observed without cell body staining. Biosensis recommends optimal dilutions/concentrations should be determined by the end user.
<b>Specificity:</b>	Specificity was demonstrated by immunohistochemistry.
<b>Cross-reactivity:</b>	This antibody is known to react with human, rat and sheep. Other species have not yet been tested.
<b>Form:</b>	Lyophilised
<b>Reconstitution:</b>	Reconstitute in 50 uL sterile water. Centrifuge to remove any insoluble material.
<b>Storage:</b>	Store lyophilized antibody at 2-8C. It is recommended that a thawed sample is stored at 2-8C for no longer than 2 weeks. Allocation of appropriate anti-bacterial agent can increase shelf life by several weeks. Diluted serum should be prepared as required. Long term stability requires storage, preferably in small aliquots at -20C or lower. Glycerol (1:1) can be added to neat serum for additional stability if intended use does not prevent this.
<b>Expiry Date:</b>	12 months upon reconstitution
<b>References:</b>	Skrapits K et al (2014) Colocalization of cocaine- and amphetamine-regulated transcript with kisspeptin and neurokinin B in the human infundibular region. PLoS One 9:(8):e103977.PMID: 25084101 Application:IH, 4% PFA, frozen sections; 1:1000, 48 hr; Cy5 Fluorescent detection with antigen recovery.

---

FOR RESEARCH USE ONLY

## **Guinea pig polyclonal antibody to mouse agouti related protein, AGRP (82-131): Whole serum**

Grayson BE, Allen SE, Billes SK, Williams SM, Smith MS, Grove KL (2006). Prenatal development of hypothalamic neuropeptide systems in the nonhuman primate. *Neurosci* 143 pp. 975-986.



The 4% PFA fixed, frozen cryostat section of the sheep hypothalamus was incubated in guinea pig polyclonal antibodies to the mouse AGRP protein at the dilution of 1:1000 overnight followed by incubation with biotinylated secondary antibodies. Cell bodies and nerve terminals in the sheep brain are intensely stained. This figure shows staining of cells when no pre-absorption is performed.

biosensis

---

FOR RESEARCH USE ONLY