



Guinea pig polyclonal antibody to human alpha MSH (138-150): Whole serum

Catalogue No.:	GP-030-50
Description:	Proopiomelanocortin (POMC) is the precursor of the melanocortin peptides alpha, beta and gamma. POMC neurons in the arcuate nucleus of the hypothalamus function as key central regulators of food intake and homeostatic control of energy balance in both rodents and non-human primates. MSH increases the pigmentation of skin by increasing the melanin production in melanocytes. MSH is produced in the pituitary gland and belongs to the POMC family.
Batch No.:	See product label
Unit size:	50 uL
Antigen:	A synthetic peptide (Ac-SYSMEHFRWGKPV) corresponding to the amino acids 138-150 from human Proopiomelanocortin (POMC). POMC is the precursor of the melanocortin peptides alpha, beta and gamma. The synthetic peptide was conjugated to a carrier protein to enhance the immunological response.
Other Names:	Proopiomelanocortin; POMC; alpha-melanocyte stimulating hormone; melanotropin alpha
Accession:	COLI_HUMAN
Produced in:	Guinea pig
Purity:	Neat serum
Applications:	IHC. A concentration of 1 in 2,000 is recommended for IHC. IHC performed in sheep brain (hypothalamus) demonstrates intense staining of cells. No staining is evident when the primary antibody is pre-absorbed with 0.5mg/mL of alpha MSH. Biosensis recommends optimal dilutions/concentrations should be determined by the end user.
Specificity:	Specificity was demonstrated by immunohistochemistry.
Cross-reactivity:	This antibody is known to react with human, rat and sheep. Other species have not yet been tested.
Form:	Lyophilised
Reconstitution:	Reconstitute in 50 uL sterile water. Centrifuge to remove any insoluble material.
Storage:	It is recommended that a thawed sample is stored at 2-8C for no longer than 2 weeks. Allocation of appropriate anti-bacterial agent can increase shelf life by several weeks. Diluted serum should be prepared as required. Long term stability requires storage, preferably in small aliquots at -20C or lower. Glycerol (1:1) can be added to neat serum for additional stability if intended use does not prevent this.
Expiry Date:	12 months upon reconstitution.
General References:	Cardoso RC, Alves BR, Sharpton SM, Williams GL, Amstalden M (2015). Nutritional Programming of Accelerated Puberty in Heifers: Involvement of Pro-Opiomelanocortin Neurons in the Arcuate Nucleus. J Neuroendocrinol. 2015 Aug;27(8):647-57.

FOR RESEARCH USE ONLY



Guinea pig polyclonal antibody to human alpha MSH (138-150): Whole serum

Grayson BE, Allen SE, Billes SK, Williams SM, Smith MS, Grove KL (2006). Prenatal development of hypothalamic neuropeptide systems in the nonhuman primate. *Neuroscience*. 2006 Dec 28;143(4):975-86.

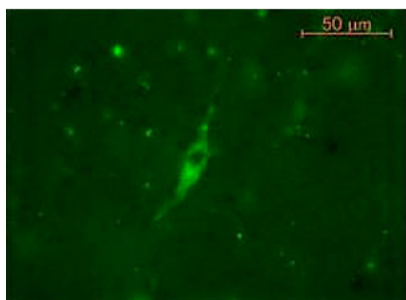


Figure shows staining of cells in sheep hypothalamus using Guinea pig polyclonal antibody to human alpha MSH (GP-030-50) at 1:1000 followed by incubation with FITC labeled goat anti-guinea pig secondary antibodies.

biosensis

FOR RESEARCH USE ONLY