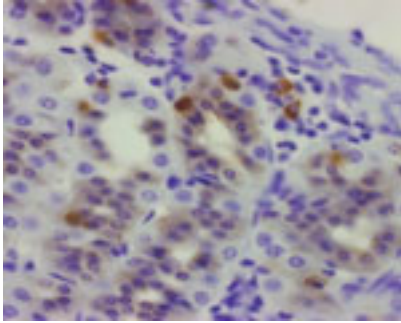


Guinea pig polyclonal antibody to human ghrelin (24-51): Whole serum

Catalogue No.:	GP-032-50
Description:	Ghrelin is the ligand for growth hormone secretagogue receptor type 1 (GHSR) and upon binding to the receptor it induces the release of growth hormone from the pituitary. This ligand has an appetite-stimulating effect and is involved in growth regulation.
Batch No.:	See product label
Unit size:	50 uL
Antigen:	A synthetic peptide (GSSFLSPEHQRVQQRKESKKPPAKLQPR) corresponding to the amino acids 24-51 from human ghrelin. This peptide was conjugated to carrier protein to enhance the immunological response.
Other Names:	Appetite-regulating hormone; Growth hormone secretagogue; Growth hormone-releasing peptide; Motilin-related peptide; M46 protein
Accession:	GHRL_HUMAN
Produced in:	Guinea pig
Purity:	Neat serum.
Applications:	IHC. A concentration of 1 in 3000 is recommended for IHC. IHC performed in sheep abomasum demonstrates intense staining of cells and terminals. No staining is evident when the primary antibody is pre-absorbed with 0.5 mg/mL of human ghrelin. Biosensis recommends optimal dilutions/concentrations should be determined by the end user.
Specificity:	Specificity was demonstrated by immunohistochemistry.
Cross-reactivity:	This antibody is known to react with sheep and human. Other species have not yet been tested.
Form:	Lyophilised
Reconstitution:	Reconstitute in 50 uL sterile water. Centrifuge to remove any insoluble material.
Storage:	It is recommended that a thawed sample is stored at 2-8C for no longer than 2 weeks. Allocation of appropriate anti-bacterial agent can increase shelf life by several weeks. Diluted serum should be prepared as required. Long term stability requires storage, preferably in small aliquots at -20C or lower. Glycerol (1:1) can be added to neat serum for additional stability if intended use does not prevent this.
Expiry Date:	12 months upon reconstitution.
References:	Kojima M, Hosoda H, Matsuo H, Kangawa K (2001). Ghrelin; discovery of the natural endogenous ligand for the growth hormone secretagogue receptor. Trends Endocrinol Metab 12 pp 118-122.

FOR RESEARCH USE ONLY

Guinea pig polyclonal antibody to human ghrelin (24-51): Whole serum



Paraffin-embedded sheep abomasum was incubated in guinea pig polyclonal antibodies to the human ghrelin protein at the dilution of 1:1000 overnight followed by incubation with biotinylated secondary antibodies. Cell bodies and nerve terminals in the sheep abomasum are intensely stained. This figure shows staining of cells when no pre-absorption is performed.

biosensis

FOR RESEARCH USE ONLY