



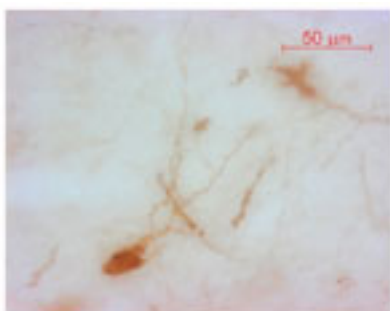
## Guinea pig polyclonal antibody to oxytocin (20-28): Whole serum

<b>Catalogue No.:</b>	GP-037-50
<b>Description:</b>	Oxytocin causes contraction of the smooth muscle of the uterus and of the mammary gland. It belongs to the vasopressin/oxytocin family. Oxytocin is secreted.
<b>Batch No.:</b>	See product label
<b>Unit size:</b>	50 uL
<b>Antigen:</b>	A synthetic peptide (CYIQNCPLG) corresponding to the amino acids 20-28 from human Oxytocin-neurophysin 1. This peptide was conjugated to carrier protein to enhance the immunological response.
<b>Other Names:</b>	OT; OXT; OT-NPI; OT-NPI;
<b>Accession:</b>	NEU1_HUMAN  NEU1_SHEEP  NEU1_BOVIN  NEU1_MOUSE  NEU1_RAT
<b>Produced in:</b>	Guinea pig
<b>Purity:</b>	Neat serum.
<b>Applications:</b>	IHC. A concentration of 1 in 2000 is recommended for IHC. IHC performed in sheep brain (hypothalamus) demonstrates intense staining of cells and terminals. No staining is evident when the primary antibody is pre-absorbed with 0.5 mg/mL of oxytocin. Biosensis recommends optimal dilutions/concentrations should be determined by the end user.
<b>Specificity:</b>	Specificity was demonstrated by immunohistochemistry.
<b>Cross-reactivity:</b>	This antibody is known to react with sheep. Other species have not yet been tested.
<b>Form:</b>	Lyophilised
<b>Reconstitution:</b>	Reconstitute in 50 uL sterile water. Centrifuge to remove any insoluble material.
<b>Storage:</b>	It is recommended that a thawed sample is stored at 2-8C for no longer than 2 weeks. Allocation of appropriate anti-bacterial agent can increase shelf life by several weeks. Diluted serum should be prepared as required. Long term stability requires storage, preferably in small aliquots at -20C or lower. Glycerol (1:1) can be added to neat serum for additional stability if intended use does not prevent this.
<b>Expiry Date:</b>	12 months upon reconstitution.
<b>References:</b>	Thompson MR, Callaghan PD, Hunt GE, Cornish JL, Mcgregor IS. (2007). A role for oxytocin and 5-HT1A receptors in the prosocial effects of 3,4 Methylendioxyamphetamine (ecstasy). Neuroscience. 146(2) pp. 509-14.

FOR RESEARCH USE ONLY



## Guinea pig polyclonal antibody to oxytocin (20-28): Whole serum



The cryostat section of the sheep hypothalamus was incubated in guinea pig polyclonal antibodies to oxytocin at the dilution of 1:1000 overnight followed by incubation with biotinylated secondary antibodies. Cell bodies and nerve terminals (from cells that produce this hormone) in the sheep brain are intensely stained. This figure shows staining of cells when no pre-absorption is performed.

biosensis

---

FOR RESEARCH USE ONLY